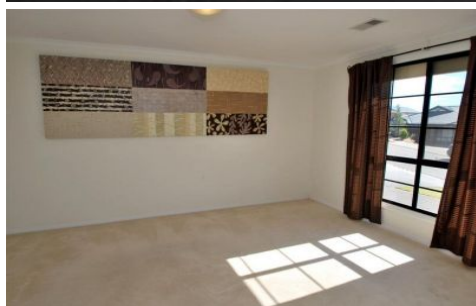


MAGAIN



6 Enginehouse Drive SHEIDOW PARK SA

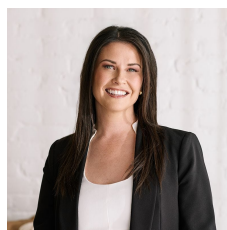
3  2  2 

Built in 2002 this delightful & modern three bedroom home will appeal especially to the new family, investor or retiree looking for an easy care lifestyle. Offering great street appeal with nicely established gardens and the convenience of location this home is sure to impress.

Inside this fabulous property the master suite boasts a sizable walk in robe and ensuite, bedroom two & three complete with mirrored built in robes, large formal lounge upon entry, dine with sliding door access to one of the homes entertaining areas, kitchen with walk in pantry and stainless steel appliances overlooks the family living which leads through to the sunroom/study (possibly even 4th bedroom).

[For full version visit the website](https://www.magain.com.au)

Type : House
Building Size : 20 sqm
View : <https://www.magain.com.au/property/6-enginehouse-drive-sheidow-park-sa/8430632>



Danielle Comer
08 8322 6111

6 Enginehouse Drive, Sheidow Park

