

MAGAIN



11 Enginehouse Drive SHEIDOW PARK SA

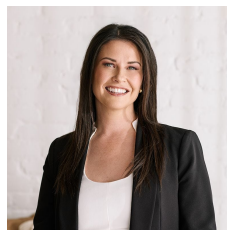
4 2 2

This wonderfully designed two storey home offers such a unique floorplan that will suit the whole family. Offering four very large bedrooms, bedrooms 2, 3 & 4 with built in robes, master suite complete with ensuite and spacious walk in robe, formal lounge with fashionable floating floor, kitchen boasting dishwasher, walk in pantry and a huge amount of cupboard and bench space, the homes dining is overlooked by the kitchen and has sliding door access to one of the homes timber decked entertaining areas. Quality fixtures and fittings throughout and every corner covered, this home is ready for you to just move in.

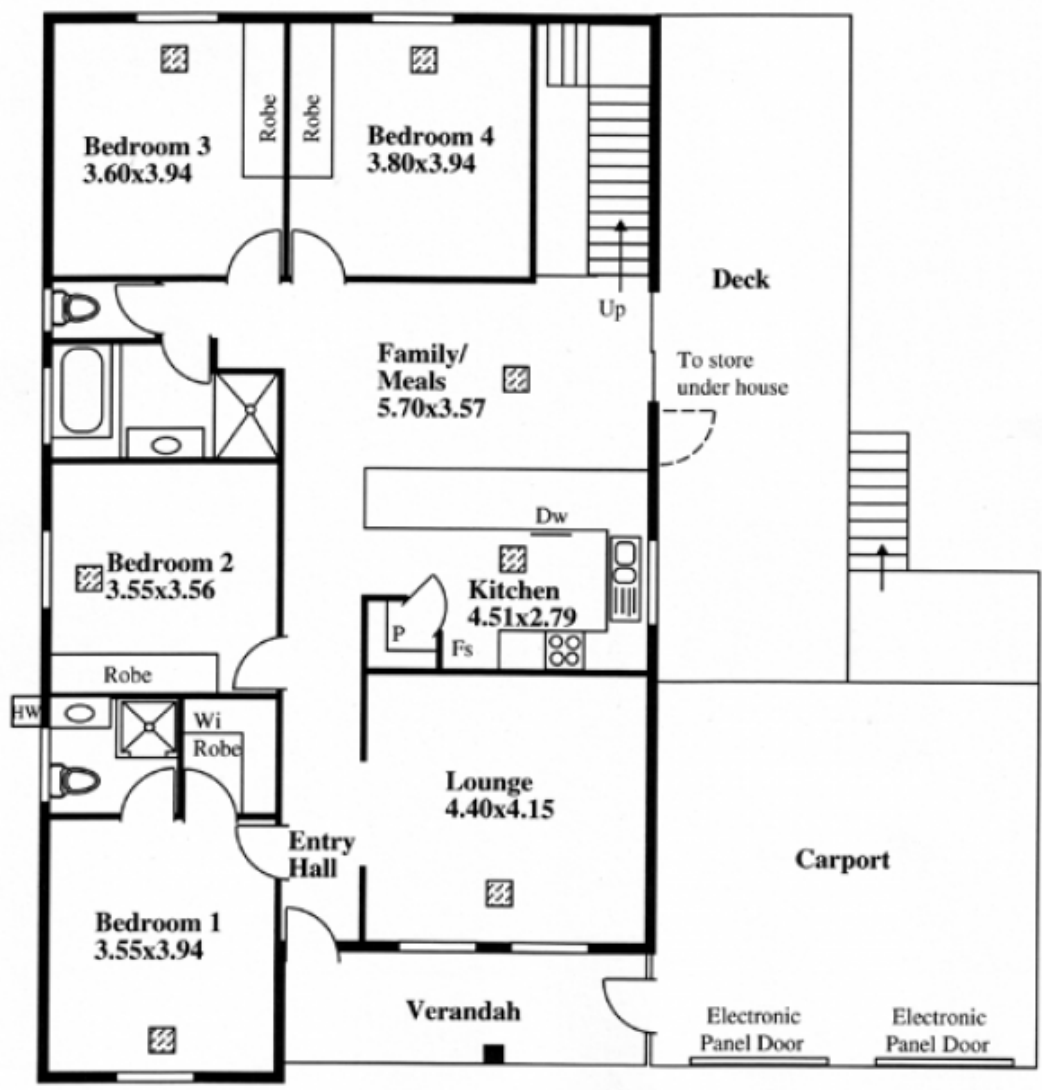
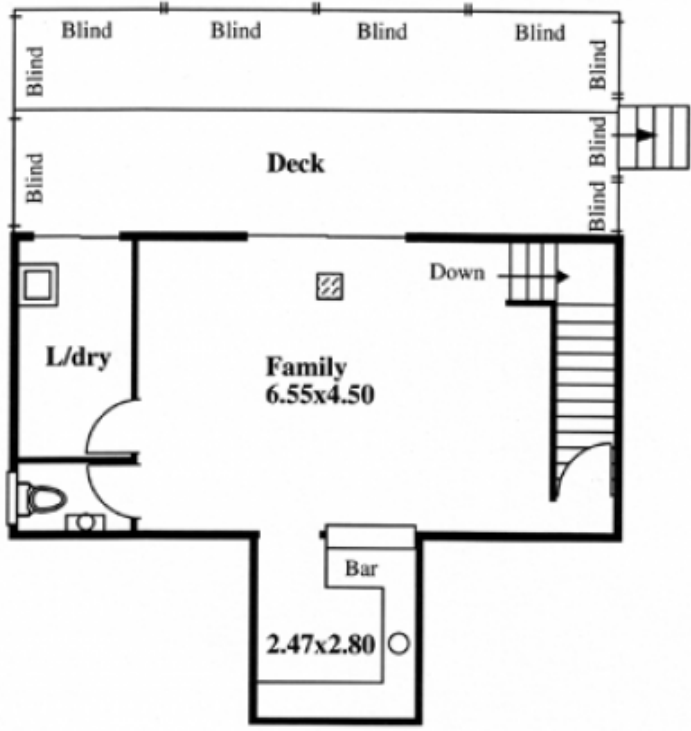
Venture downstairs to the huge rumpus/games room with fully equipped built in bar, very impressive! Sliding door access from the rumpus out to the pitched roof timber

[For full version visit the website](https://www.magain.com.au/property/11-enginehouse-drive-sheidow-park-sa/8430651)

Type : House
Building Size : 24 sqm
View : <https://www.magain.com.au/property/11-enginehouse-drive-sheidow-park-sa/8430651>



Danielle Comer
08 8322 6111



Desk Top Image - (610-05)