

# MAGAIN



24 Navigator Avenue SHEIDOW PARK SA

4 2 3

Contact Stuart Costello for viewing times.

This very spacious 2005 built Hickinbotham home is luxurious, elegant, and offers an extremely functional layout.

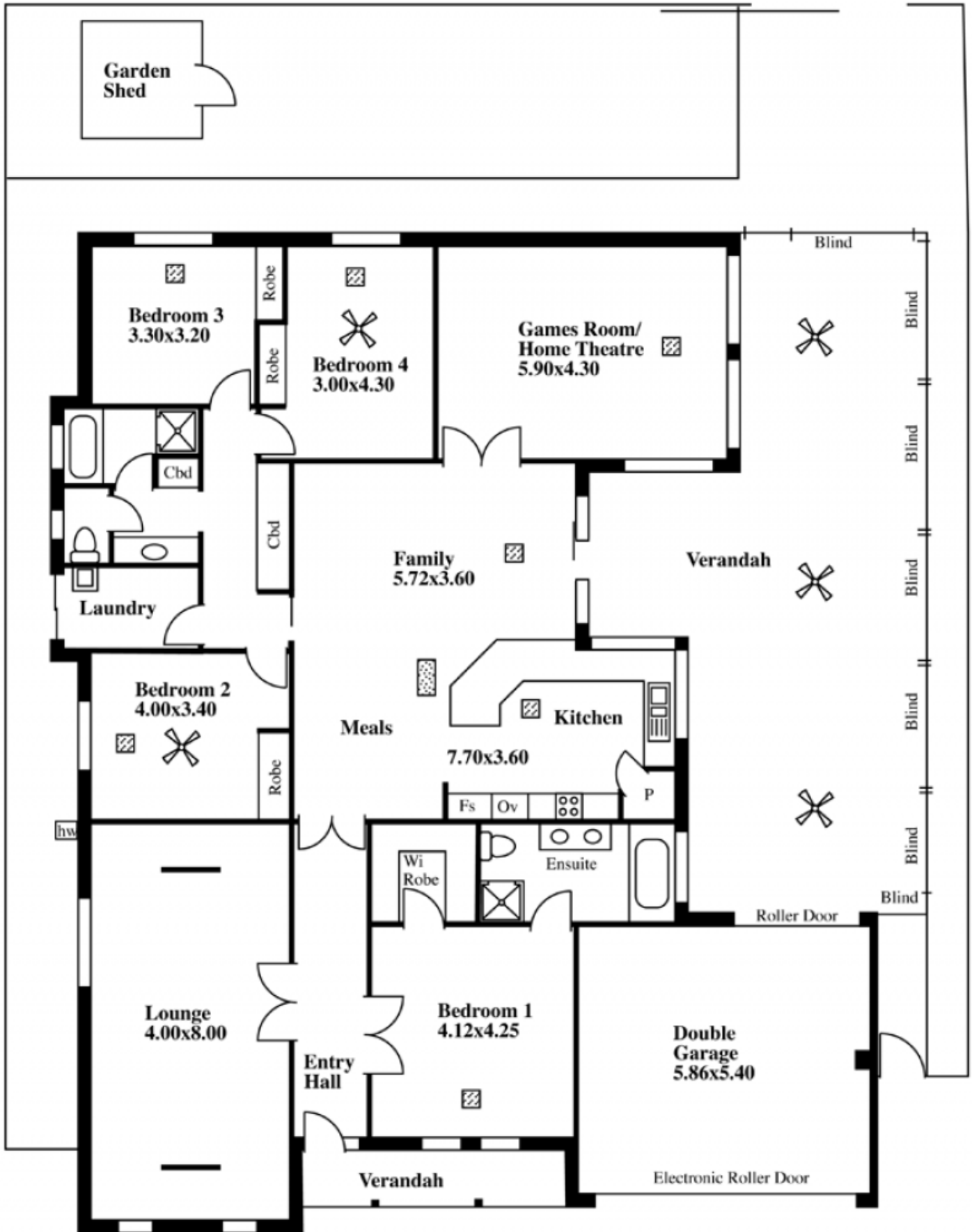
Boasting four spacious bedrooms all with built in robes, the main with a walk in robe and huge ensuite bathroom including a spa bath, three separate living areas, large open kitchen which overlooks the central living room and outdoor entertaining area, ducted reverse cycle air conditioning, and elegant double doors to add that extra touch of class to this immaculately finished home.

The central living area is open plan with an architectural

[For full version visit the website](https://www.magain.com.au/property/24-navigator-avenue-sheidow-park-sa/8430654)

**Type** : House  
**Building Size** : 27 sqm  
**View** : <https://www.magain.com.au/property/24-navigator-avenue-sheidow-park-sa/8430654>

# 24 Navigator Avenue, Sheidow Park





This drawing is for illustration purposes only  
 (Drawing is not to scale)

The drawing and the information contained is not intended to be part of any contract. All measurements are approximate and details intended to be relied upon should be independently verified.

ESTIMATE OF AREA  
 261.35 Square metres/ 28.09 Squares  
 (Including Garage UMR)

Desk Top Image - (Y0413-68)

## LEGEND

-  Air cond ducts
-  Sky light