

MAGAIN



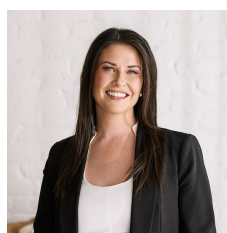
4 Hughes Court TROTT PARK SA

4 2 2

Situated in the prestigious 'Woodend Estate' this ex-display home will have instant appeal. Loaded with modern & valuable extras this four bedroom home will suit all the needs of your family. With Woodend Primary School located just seconds from your front door you won't find a home more convenient. Sit in the comfort of your home and watch the children walk across the reserve to school.

With an abundance of space throughout this quality residence boasts a spacious formal lounge and dine, quality timber kitchen with dishwasher, walk in pantry and ample cupboard and bench space, open plan casual living and dine. Master bedroom features built in robe and ensuite, bedroom two also with built in robe and bedroom two and three both with access to the updated two way

Type : House
Building Size : 20 sqm
View : <https://www.magain.com.au/property/4-hughes-court-trott-park-sa/8430684>



Danielle Comer
08 8322 6111

[For full version visit the website](https://www.magain.com.au)

<https://www.magain.com.au>
Magain Real Estate

Shop 3, Happy Valley Shopping Centre, 50 Kenihans H
08 8322 6111

