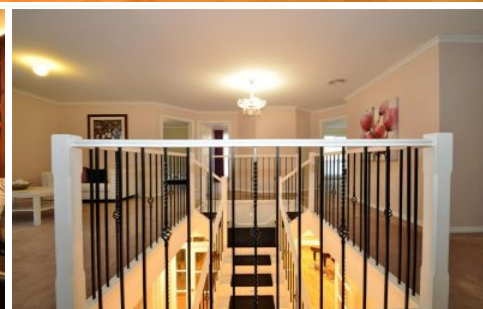


MAGAIN



10A Olivier Crescent MORPHETT VALE SA

4 2 1

This spacious and modern two storey home is a winner for those looking for something with the 'Wow factor'.

Set back from the road at the end of a quiet court, only minutes to shops, parks and schools, it features a grand entrance with an impressive L.E.D. lit feature staircase, four bedrooms, master with huge ensuite and walk in robe, three separate living areas and 2.5 bathrooms.

The stunning kitchen with stainless steel appliances and moveable island bench overlooks the generous open plan living with floating floors and split system heating and cooling.

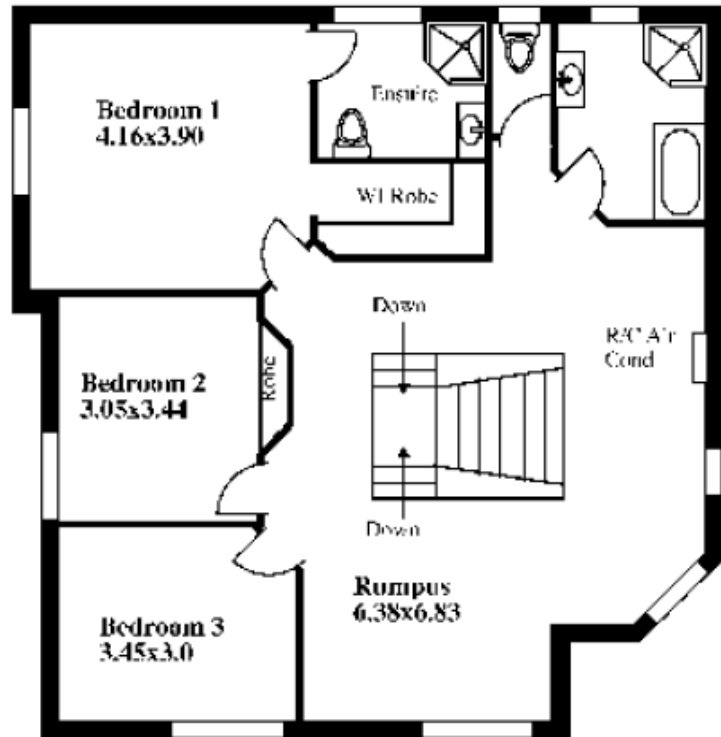
Outdoor offers a low maintenance lifestyle for the time

[For full version visit the website](https://www.magain.com.au/property/10-a-olivier-crescent-morphett-vale-sa/8430748)

Type : House
Building Size : 26 sqm
View : <https://www.magain.com.au/property/10-a-olivier-crescent-morphett-vale-sa/8430748>

10a Olivier Court, Morphett Vale

UPSTAIRS



This drawing is for information purposes only.
(DRAWING IS NOT TO SCALE)

The drawing and the information contained is not intended to be used in any contract. All measurements are approximate and details intended to be relied upon should be independently verified.

ESTIMATE OF LIVING AREA

GROUND FLOOR 137.08 Square metres/ 14.73 Squares

UPSTAIRS 117.66 Square metres/ 12.52 Squares

TOTAL 254.73 Square metres/ 27.06 Squares

GROUND FLOOR

