

MAGAIN



4 Padthaway Court WOODCROFT SA

3  2  1 

A perfect opportunity to downsize without compromising, this lovely three bedroom, ensuite home offers a low maintenance lifestyle - ideal for the retiree, time poor, or first home buyer.

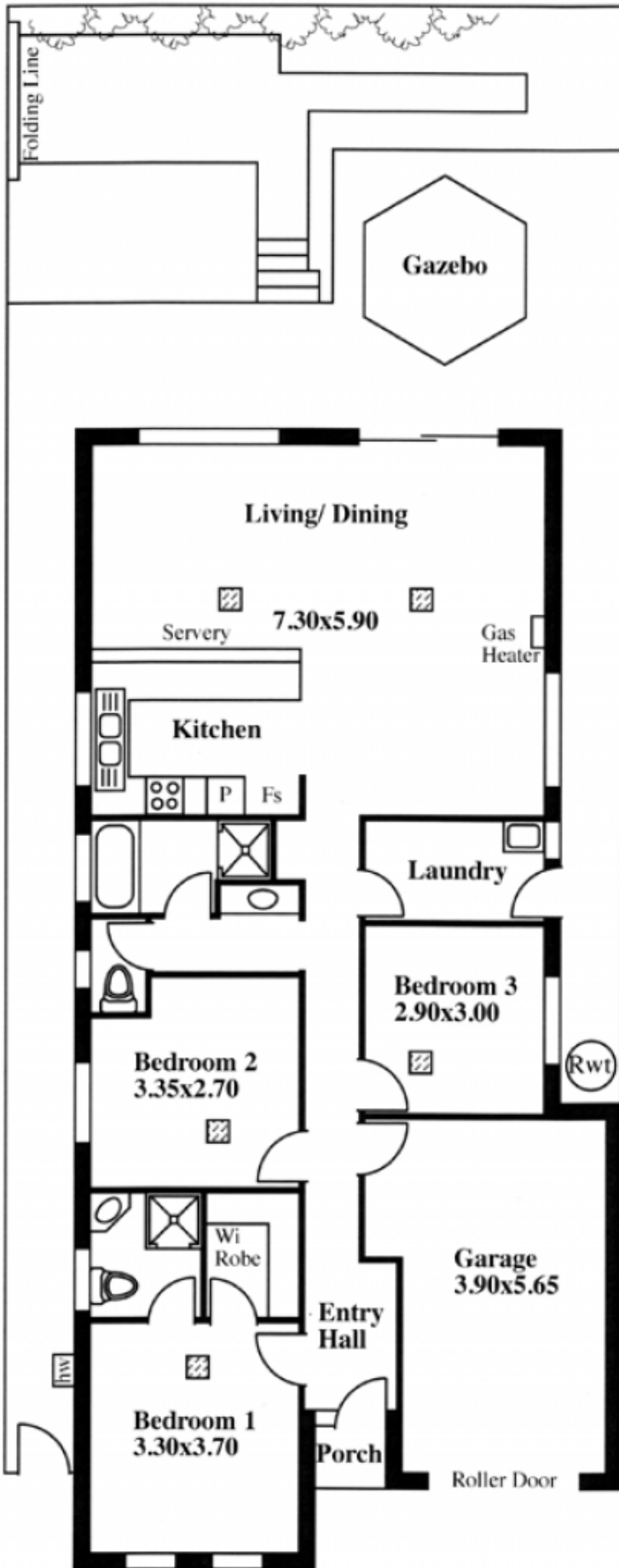
Situated at the end of a quiet court and handy to local shops, parks and transport, it features a popular and functional floorplan. Master bedroom with ensuite and walk in robe, neutral three way main bathroom, open plan kitchen/living with ducted evaporative cooling and gas heating for year round comfort.

The manageable backyard is private and offers a gazebo for relaxing with friends, rain water tank as well as a lock up garage with secure internal access.

All this, and situated in one of the south's most family friendly areas, this affordable property will impress!


[For full version visit the website](https://www.magain.com.au/property/4-padthaway-court-woodcroft-sa/8430793)

Type : House
Building Size : 14 sqm
View : <https://www.magain.com.au/property/4-padthaway-court-woodcroft-sa/8430793>



4 Padthaway Court, Woodcroft

LEGEND

 Air cond ducts

This drawing is for illustration purposes only
(Drawing is not to scale)

The drawing and the information contained is not intended to be part of any contract. All measurements are approximate and details intended to be relied upon should be independently verified.

ESTIMATE OF AREA
HOUSE 141.17 Square metres/ 15.17 Squares
(Including Garage)

Desk Top Image (V0211-104)