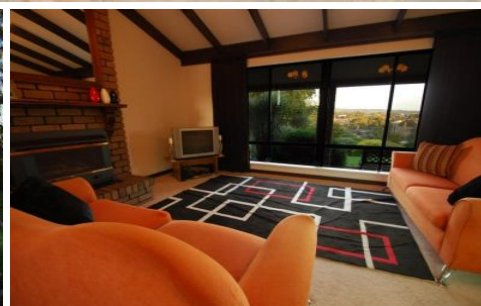


MAGAIN



8 Mark Court O'HALLORAN HILL SA

3 2 6

Call Jason O'Halloran on 0439 802 735 for VIP viewing times.

This is a fantastic family home with all the 'must haves'.....and a few more!. It is truly a great opportunity to live the life you have always promised yourself, with room to move, modern appointments in a wonderful private and well positioned location.

Set on the highest point of a quiet court, with beautiful views back across to the Woodcroft hills face and back across O'Halloran Hills picturesque Glenthorne Farm. This truly is a family home for all seasons.

Step through door and central entrance hallway is the gateway to this beautiful family home. Your greeted by a

[For full version visit the website](#)

Type : House
Building Size : 19 sqm
View : <https://www.magain.com.au/property/8-mark-court-ohalloran-hill-sa/8430862>

