

# MAGAIN



## 4 Sandalwood Grove WOODCROFT SA

4 2 5

This attractive, family sized home offers something for everyone.

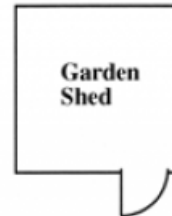
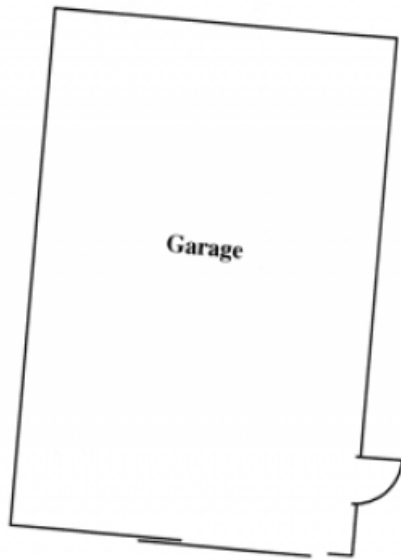
Located in a quiet court in this popular estate, it features an abundance of off street parking for all your vehicles, work van, boat or trailer, as well as drive thru access to a huge 20x30 shed with pit, power and concrete floor - ideal for the tradie.

With four bedrooms, master with ensuite and walk in robe, formal lounge/dine and a good size family room, it's perfect for those looking for a bit more space.

The massive pitched entertaining area with cafe blinds offers a place to wine and dine your guests all year round.

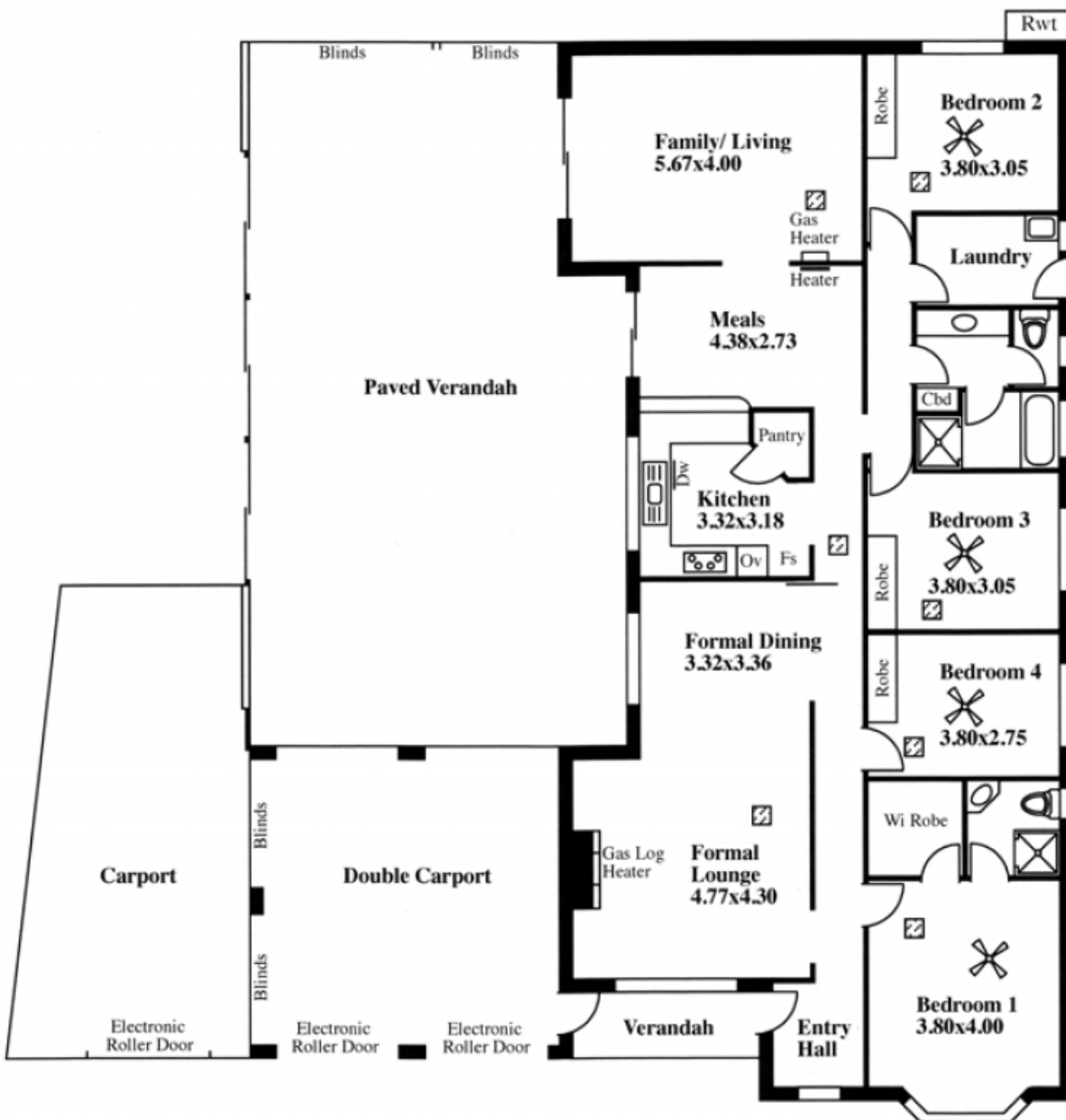
[For full version visit the website](#)

**Type** : House  
**Building Size** : 22 sqm  
**View** : <https://www.magain.com.au/property/4-sandalwood-grove-woodcroft-sa/8430886>



# 4 Sandalwood Grove, Woodcroft

LEGEND  
 Air cond ducts



This drawing is for illustration purposes only  
(Drawing is not to scale)

The drawing and the information contained is not intended to be part of any contract. All measurements are approximate and details intended to be relied upon should be independently verified.

ESTIMATE OF AREA  
 HOUSE 184.06 Square metres/ 19.78 Squares  
 (Not including Garage, Carports, Verandahs)