

# MAGAIN



## 9 Woodcroft Drive MORPHETT VALE SA

4  2  1 

Contact Travis Denham or Craig Thomson for viewing times.

This fantastic home is situated on a generous allotment of approx 660sqm, set in a convenient location close to local shops, quality schools, public transport, access to the southern expressway and more. It is a must see for the growing family looking to up-size, or those just seeking somewhere special to call home.

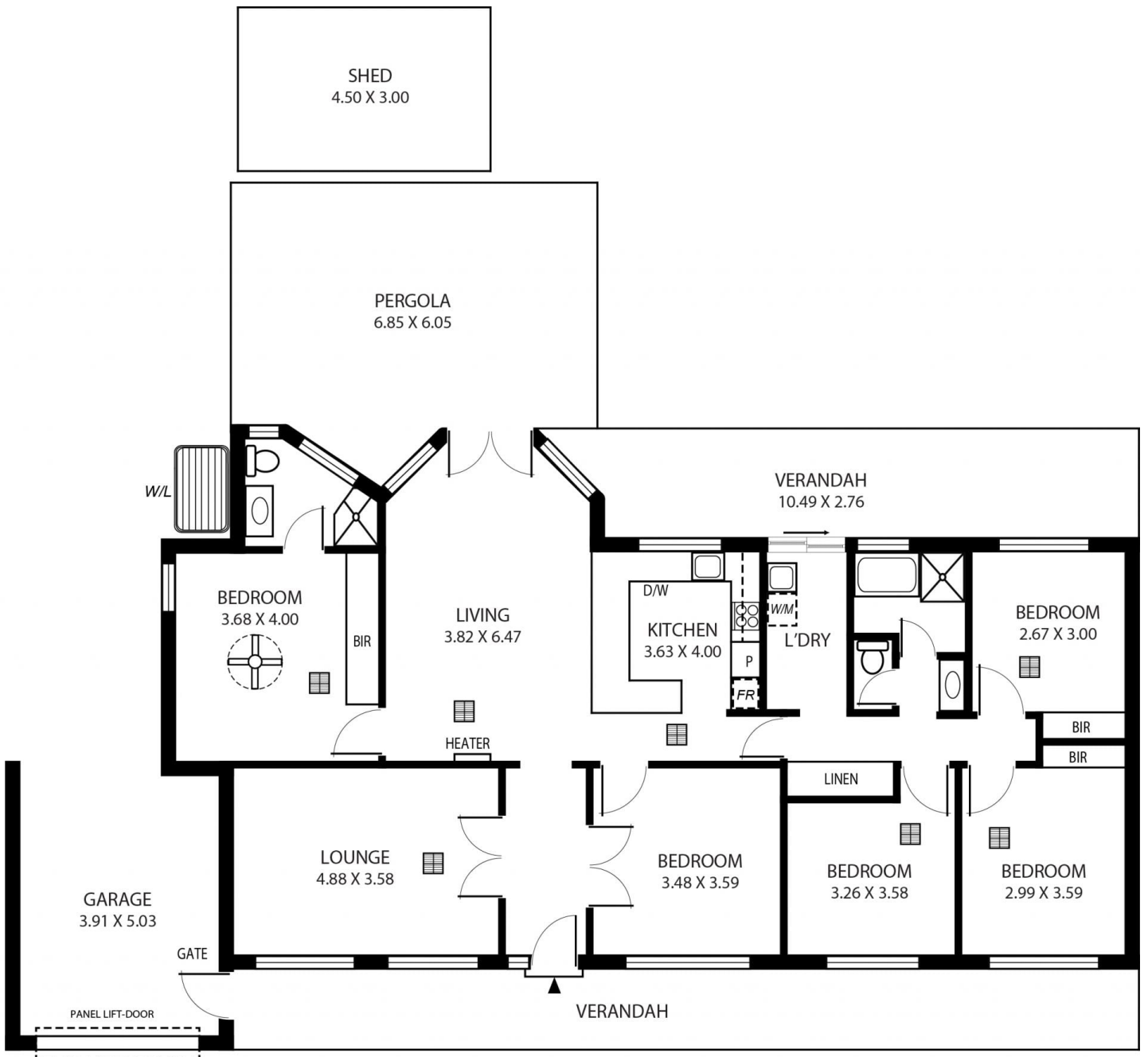
The home offers 4 size-able bedrooms throughout, each fitted with quality carpet flooring. The master suite is complete with a built in robe, ceiling fan and a spacious ensuite. The further 3 rooms are spacious in size with bed 3 ideally offering a built in robe. Serviced by the well

[For full version visit the website](https://www.magain.com.au)

**Type** : House  
**Building Size** : 21 sqm  
**Land Size** : 660 sqm  
**View** : <https://www.magain.com.au/property/9-woodcroft-drive-morphett-vale-sa/8430905>



**Travis Denham**  
08 8398 1494



*This drawing is for illustration purposes only .  
All measurements are approximate and details intended  
to be relied upon should be independently verified.*