

MAGAIN



12-100 Pimpala Road MORPHETT VALE SA

3  1  1 

Contact Travis Denham or Craig Thomson for viewing times.

This fantastic modern home is set in the secure estate of Castle Hill and is located close to shops, quality schools, public transport and more. It is a must see for first home buyers, investors and downsizers alike.

The home offers 3 sizeable bedrooms throughout, each complete with carpet flooring and ceiling fans. Bed 3 is conveniently fitted with a built in robe, while the master suite is ideally fitted with a split system reverse cycle air conditioner and a 3 door built in robe.

The large living room is located at the front of the home and offers a split system reverse cycle air conditioner for

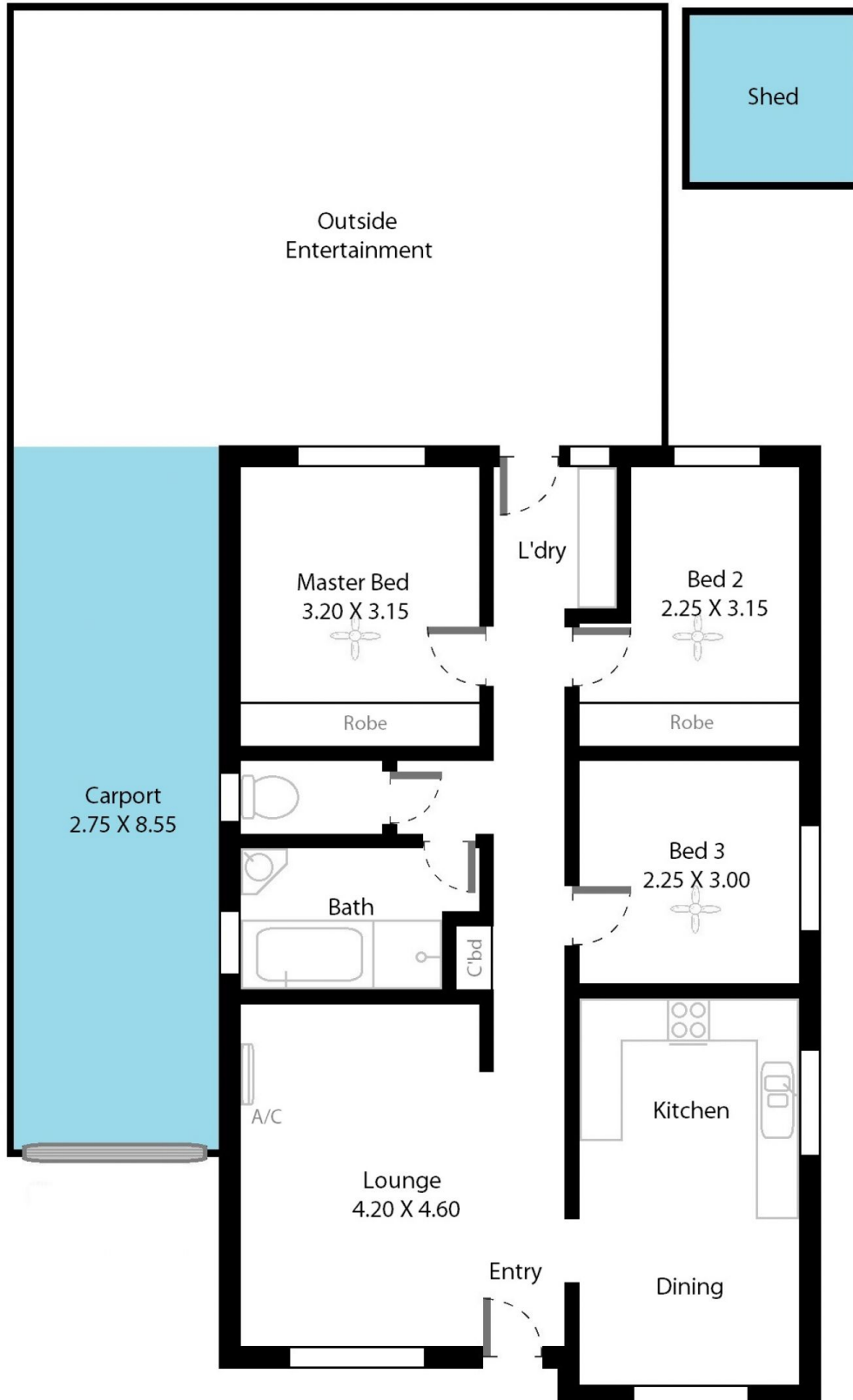
[For full version visit the website](https://www.magain.com.au)

Type : House
Building Size : 11 sqm
Land Size : 259 sqm
View : <https://www.magain.com.au/property/12-100-pimpala-road-morphett-vale-sa/8430913>



Travis Denham
08 8398 1494

Unit 12/100 Pimpala Road, South Australia.



Picture intended as a reference only. Any specific measurements required should be obtained by an independent surveyor.