

MAGAIN



48 Jimmy Watson Drive WOODCROFT SA

3 1 1

Situated in this prestigious pocket of Woodcroft, overlooking marvellous parklands and leafy old Gum trees, while still being close to local shops and schools.

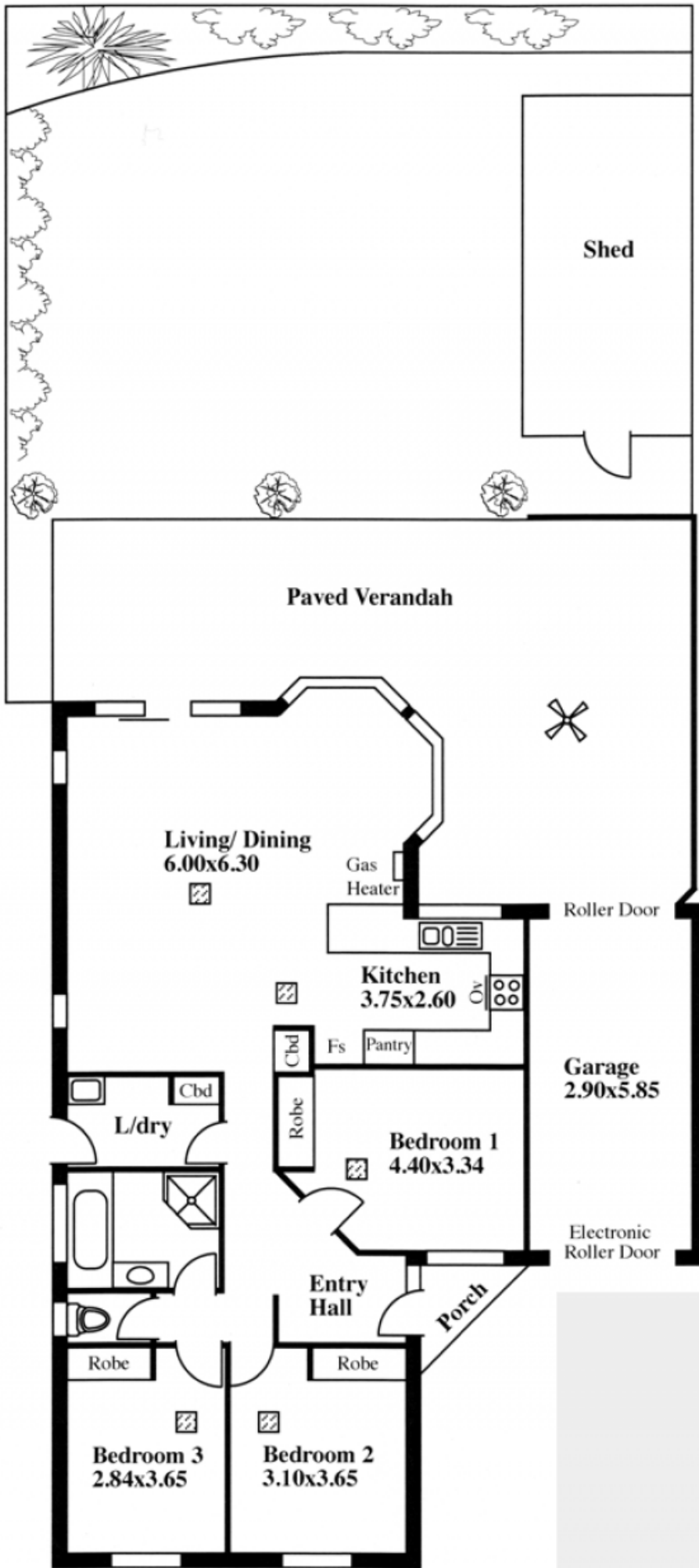
Built in 2001 and featuring three generous bedrooms, all with built in robes, lovely bathroom, kitchen with pantry and lots of bench space, open plan living with windows out to the pitched entertaining area and landscaped yard.

Complete with ducted evaporative air conditioning throughout and gas heating, shed with concrete floor, light & power, lockup garage under main roof and more.

Don't miss out on this great opportunity, whether your a busy young family looking for a start or looking to downsize

[For full version visit the website](https://www.magain.com.au/property/48-jimmy-watson-drive-woodcroft-sa/8430927)

Type : House
Building Size : 14 sqm
View : <https://www.magain.com.au/property/48-jimmy-watson-drive-woodcroft-sa/8430927>



LEGEND

 Air cond ducts