

MAGAIN



16 Harbour Street SHEIDOW PARK SA

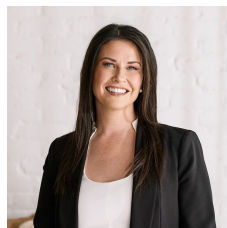
3  2  2 

Call Danielle Comer on 0431 560 402 for viewing times.

Forget the hassle of building, just move in and start enjoying everything on offer in this sought after location.

This elegant home offers an abundance of space provided by a uniquely designed floorplan. Comprising of three generous sized bedrooms, master with ensuite and walk in robe and bedroom two and three with built in robes. Walk down to a truly enormous family living, dine and spacious kitchen with stainless steel appliances, dishwasher and plenty of cupboard space. This open plan living area makes a fantastic heart to the home and has direct sliding door access to the secure rear yard.

Type : House
Building Size : 17 sqm
View : <https://www.magain.com.au/property/16-harbour-street-sheidow-park-sa/8430935>



Danielle Comer
08 8322 6111

[For full version visit the website](https://www.magain.com.au)

