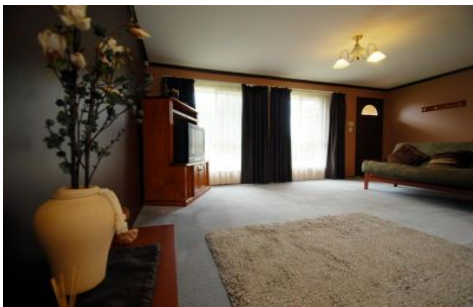





MAGAIN



19 Bathbank Crescent SHEIDOW PARK SA

4  2  1 

Contact Stuart Costello on 0418 963 642 for viewing times.

Situated in a beautiful tree lined street and only steps to Woodend Primary School is this spacious family home. The house boasts four large bedrooms, ensuite and walk in robe to the master, two large living areas, a central kitchen with updated appliances, large bathroom, ducted cooling, gas heating, all wrapped up in a versatile floor plan.

Outside you'll find a large blank canvas yard with tons of room for the kids and pets to enjoy. The yard is large enough to built a great shed or even a pool (stcc). There is a paved entertaining area and potential for rear yard access through the single carport.

Type : House
Building Size : 18 sqm
View : <https://www.magain.com.au/property/19-bathbank-crescent-sheidow-park-sa/8430938>

[For full version visit the website](https://www.magain.com.au)

<https://www.magain.com.au>
Magain Real Estate

Shop 3, Happy Valley Shopping Centre, 50 Kenihans H
08 8322 6111

Garden Shed

19 Bathbank Crescent, Sheidow Park

This drawing is for illustration purposes only
(Drawing is not to scale)

The drawing and the information contained is not intended to be part of any contract. All measurements are approximate and details intended to be relied upon should be independently verified.

ESTIMATE OF AREA

HOUSE 162.59 Square metres/ 17.47 Squares

