

MAGAIN



29 Nedland Crescent PORT NOARLUNGA SOUTH SA

3  1  2 

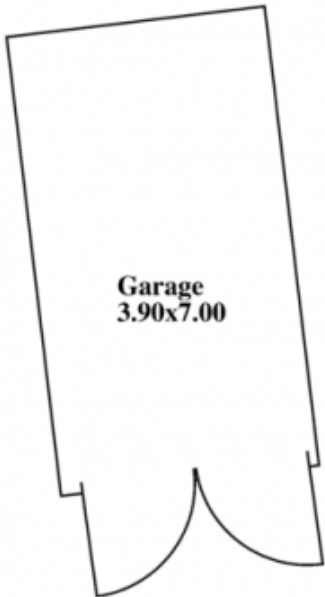
The smart choice for the young couple or family looking to buy in this fantastic location, literally one minutes walk to the beautiful southern coastline.

Attractive and affordable, this lovely home offers something for everyone. Featuring a popular floorplan consisting of three bedrooms, all with built in robes, updated bathroom, formal L shape lounge/dine with air conditioning and combustion fire. The kitchen is adjacent the family room and looks out to the massive, paved all weather pergola with cafe blinds - ideal for entertaining friends all year round.

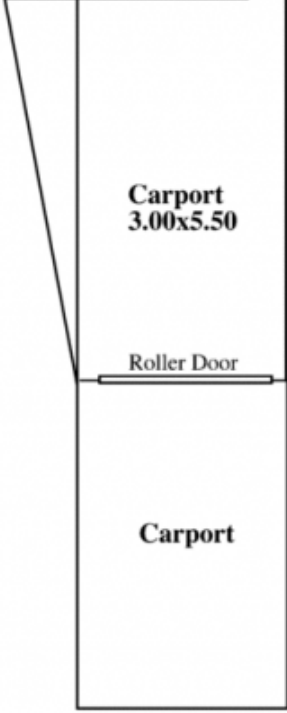
With a generous 718 sqm flat block that offers a secure and useable space for the kids or pets to play as well as

[For full version visit the website](#)

Type : House
Building Size : 13 sqm
View : <https://www.magain.com.au/property/29-nedland-crescent-port-noarlunga-south-sa/8430992>

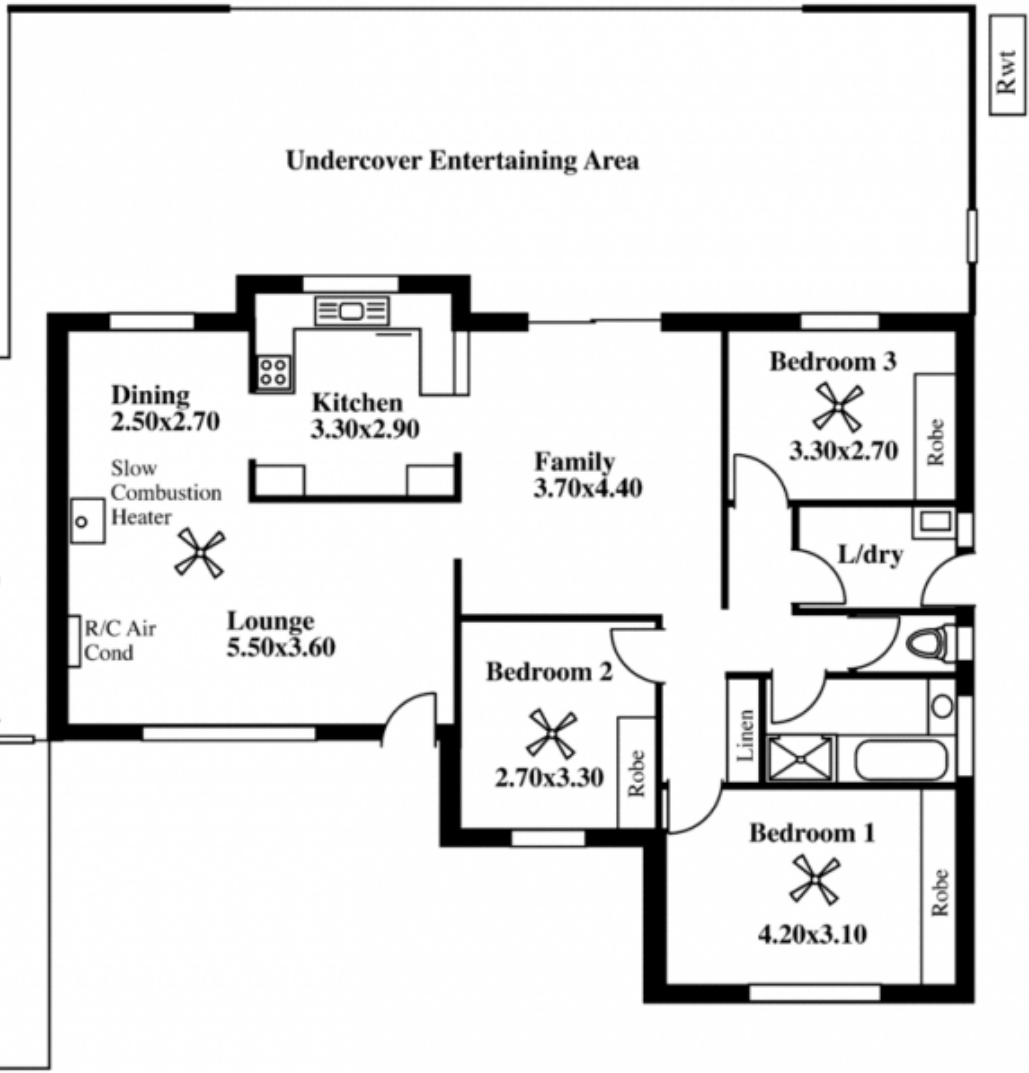


Garage
3.90x7.00



Carport
3.00x5.50

Carport



Undercover Entertaining Area

Dining
2.50x2.70

Kitchen
3.30x2.90

Slow
Combustion
Heater

Family
3.70x4.40

Bedroom 3
3.30x2.70

L/dry

Lounge
5.50x3.60

R/C Air
Cond

Bedroom 2
2.70x3.30

Robe

Bedroom 1
4.20x3.10

Robe

Linen

Rwt