

# MAGAIN



2 Jimmy Watson Drive WOODCROFT SA

3  2  3 

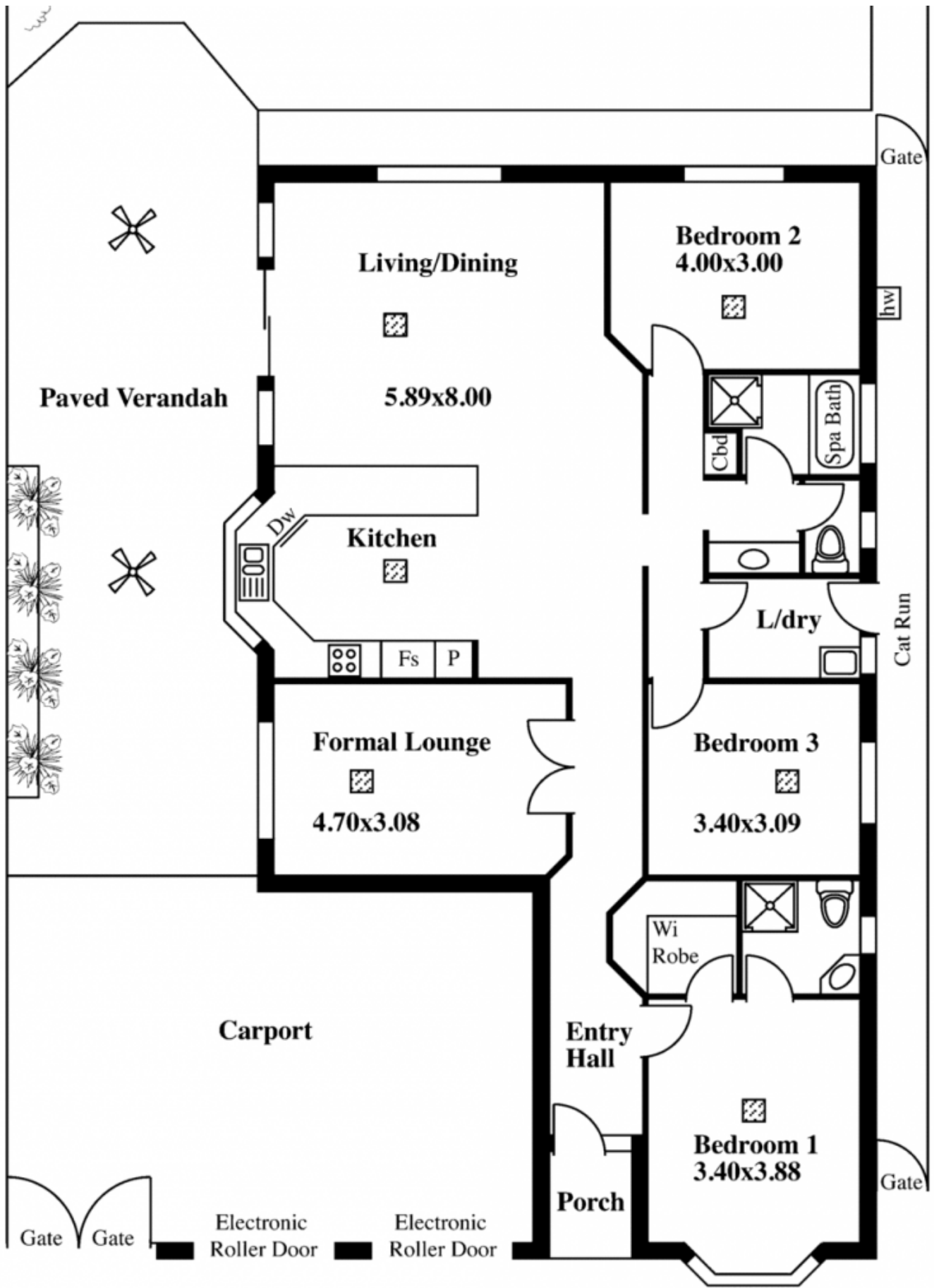
Situated in this popular pocket of Woodcroft, this 2002 Sterling built home will appeal to those looking for something with high quality appointments plus a whole lot more. With a large double garage under main roof for the daily drive plus a third carport under an extended roof with lockup gates to safely store a third vehicle.

Offering three good size bedrooms, master with feature bay window, walk in robe and ensuite, formal lounge room with stylish glass doors, large open plan family room and meals area, together with a huge kitchen with plenty of cupboard and bench space, plus dishwasher.

Outside you will find a beautifully set up pitched entertaining area complete with lighting, ceiling fans,

[For full version visit the website](#)

**Type** : House  
**Building Size** : 18 sqm  
**View** : <https://www.magain.com.au/property/2-jimmy-watson-drive-woodcroft-sa/8431005>



Paved Verandah

Living/Dining

5.89x8.00

Kitchen

Formal Lounge

4.70x3.08

Bedroom 2

4.00x3.00

Bedroom 3

3.40x3.09

Bedroom 1

3.40x3.88

Carport

Entry Hall

Porch

Cbd

Spa Bath

L/dry

Wi Robe

Gate

Gate

Gate

Electronic Roller Door

Electronic Roller Door

hw

Cat Run

Gate