




# MAGAIN



10 Platform Avenue SHEIDOW PARK SA

4  2  2 

Call Danielle Comer for viewing times.

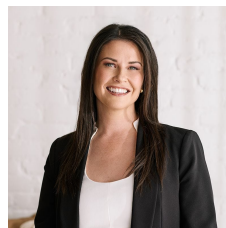
A simply delightful home peacefully nestled on a family friendly street.

With an abundance of space throughout, this high quality residence boasts four bedrooms, three with built in robes and master suite complete with ensuite and his' and her' walk in robes. Spacious formal lounge, kitchen with walk in pantry and dishwasher overlooking the homes large dining area, magnificent built in wet bar plus rumpus/games room with sliding door access to the outdoor area.

Outdoors is without a doubt a masterpiece. An exquisite pitched pergola with modern cafe blinds makes this area

[For full version visit the website](https://www.magain.com.au/property/10-platform-avenue-sheidow-park-sa/8431019)

**Type** : House  
**Building Size** : 24 sqm  
**View** : <https://www.magain.com.au/property/10-platform-avenue-sheidow-park-sa/8431019>



**Danielle Comer**  
08 8322 6111

Garden Shed

