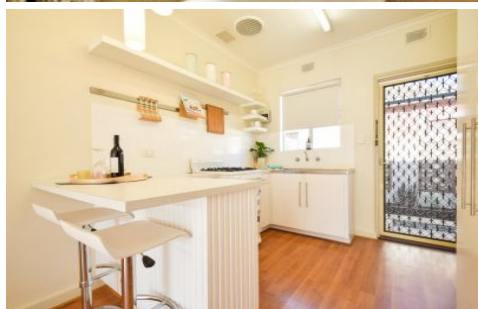


# MAGAIN



2-42 Clifton Street CAMDEN PARK SA

2  1  1 

Please contact Travis Denham or Craig Thomson for viewing times.

This tasteful 2 bedroom unit offers a great opportunity for first home buyers and investors alike. Set in an ideal location being close to amenities such as shopping centres, transport, quality schools, restaurants, Glenelg Beach (10 minutes approx.) and only a 15 minute (approx.) drive to the CBD.

The main features of this fantastic unit include:

- Open plan living
- Spacious master bedroom with ceiling fan
- Carpet to both bedrooms
- Floating flooring

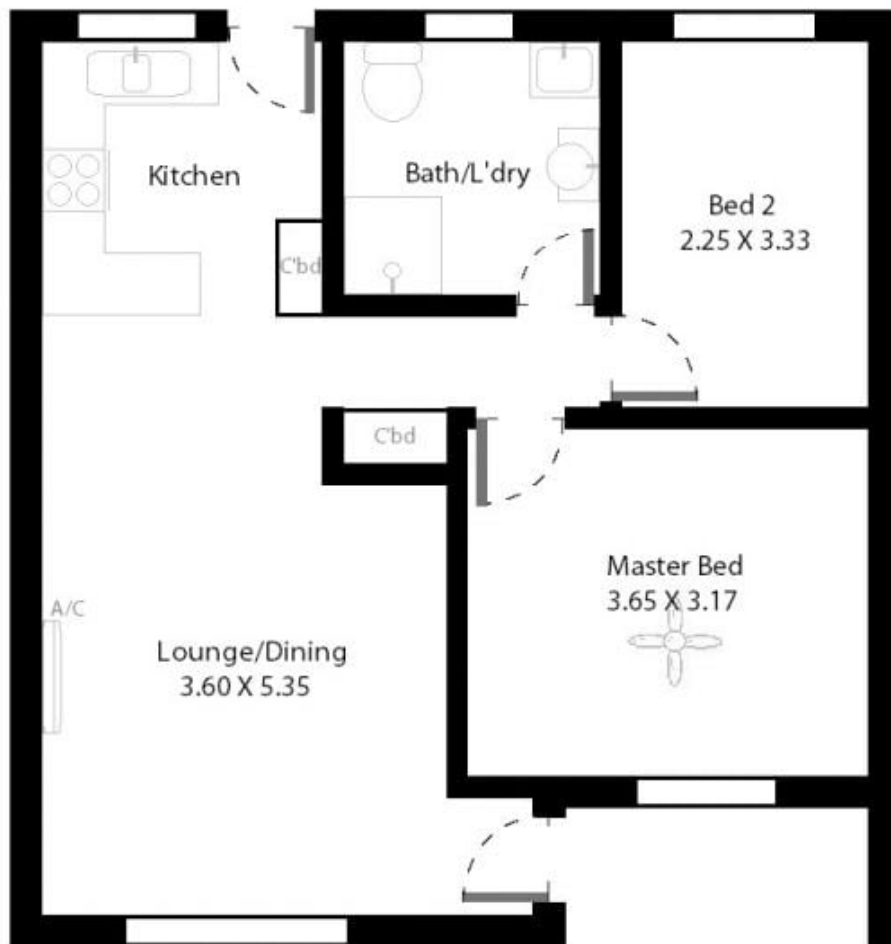
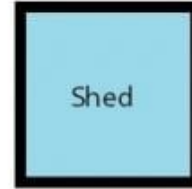
[For full version visit the website](https://www.magain.com.au/property/24-2-clifton-street-camden-park-sa/8431076)

**Type** : Unit  
**Building Size** : 6 sqm  
**View** : <https://www.magain.com.au/property/24-2-clifton-street-camden-park-sa/8431076>



**Travis Denham**  
08 8398 1494

Unit 2/42 Clifton Street Camden Park, South Australia.



**Picture intended as a reference only.** Any specific measurements required should be obtained by an independent surveyor.