

MAGAIN



11 Pedro Avenue MORPHETT VALE SA

3  1  4 

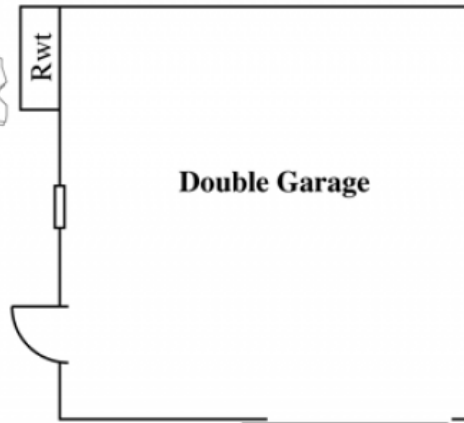
This attractive & affordable home is perfect for first home buyers looking to enter the property market or a sound bricks & mortar' investment. With a list of features including valuable extra parking and garage access, this home is ready to move straight into.

Offering three bedrooms, large L' shaped formal lounge and dining with bay windows, painted feature walls and heating & cooling, recently updated kitchen with pantry and stainless steel appliances.

Outside the home has a double carport along with drive through access to a large shed, perfect for locking away a project car or a man cave' retreat. Also with shaded patio entertaining area, green fernery and pond plus rear grassy

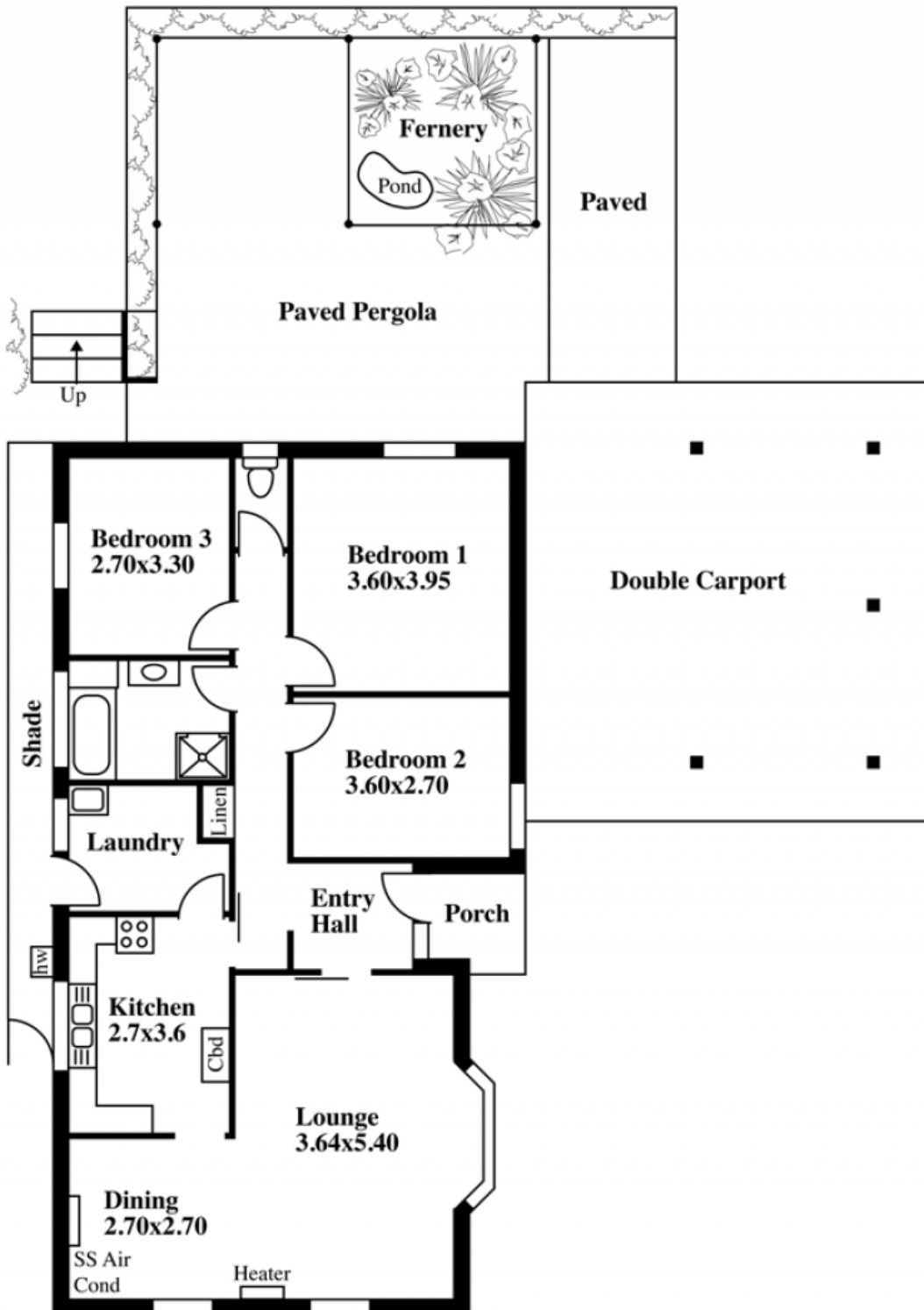
[For full version visit the website](https://www.magain.com.au/property/11-pedro-avenue-morphett-vale-sa/8431082)

Type : House
Building Size : 13 sqm
View : <https://www.magain.com.au/property/11-pedro-avenue-morphett-vale-sa/8431082>



Double Garage

Rwt



Paved Pergola

Paved

Double Carport

Bedroom 3
2.70x3.30

Bedroom 1
3.60x3.95

Bedroom 2
3.60x2.70

Laundry

Entry
Hall

Porch

Kitchen
2.7x3.6

Lounge
3.64x5.40

Dining
2.70x2.70

SS Air
Cond

Heater

Shade

Up