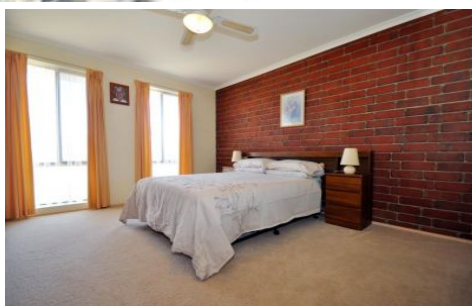


MAGAIN



10-11 Ash Street ABERFOYLE PARK SA

2 1 1

Contact Stuart Costello for viewing times.

Nestled in a convenient location in the heart of Aberfoyle Park is this extremely well cared for home unit. Boasting two bedrooms, the master is enormous with robes that will be included with the sale, and built in robes in the second bedroom, large living area, separate dining, a very practical kitchen, RC/AC, and all wrapped up in a great layout.

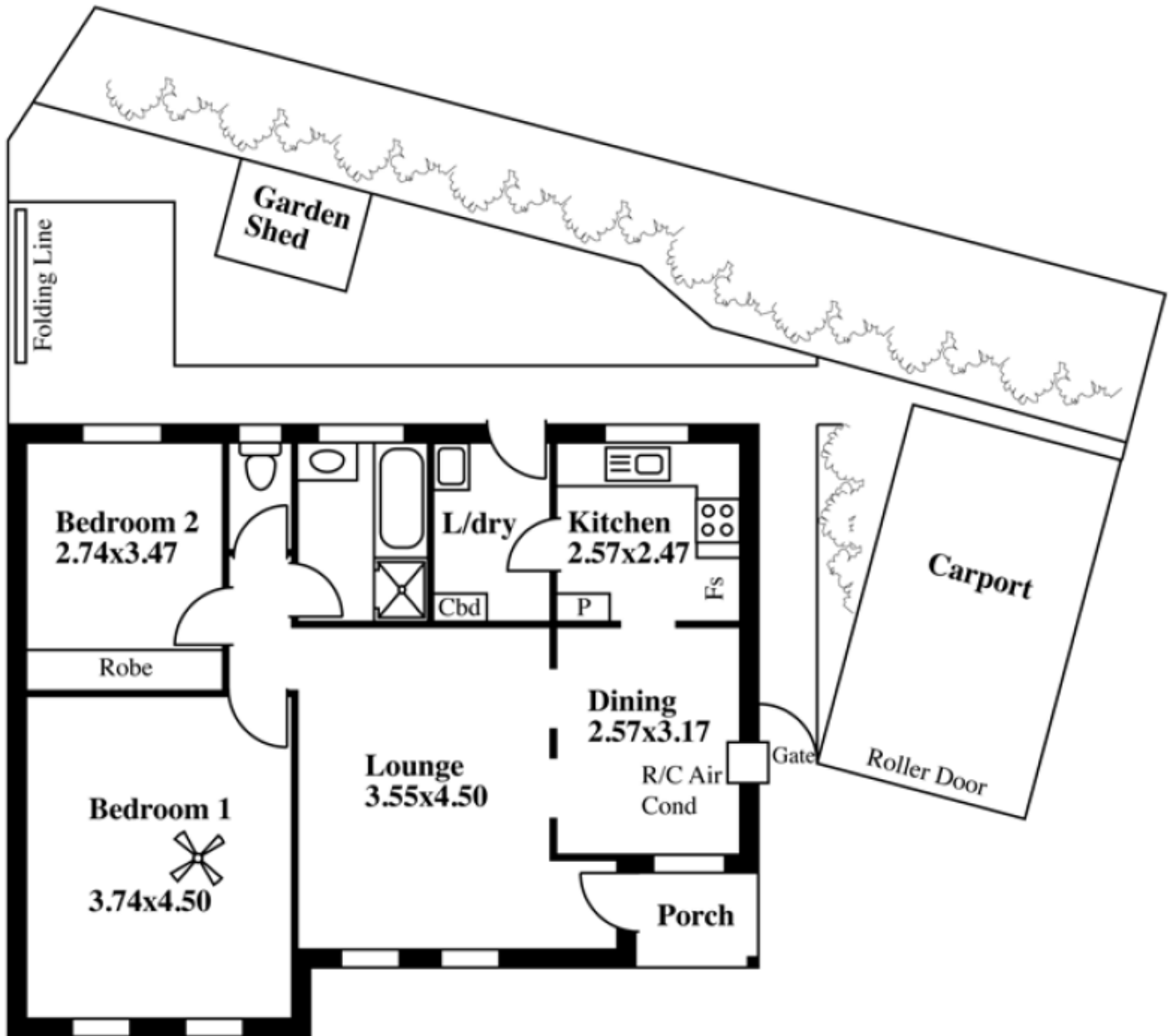
Outside you'll be impressed with the beautiful low maintenance garden, tool shed, and secure carport.

Not to be missed this property will suit a variety of different buyers. For more information or to register your interest please contact Stuart Costello. (RLA 222182)

[For full version visit the website](https://www.magain.com.au/property/10-11-ash-street-aberfoyle-park-sa/8431103)

Type : Unit
Building Size : 9 sqm
View : <https://www.magain.com.au/property/10-11-ash-street-aberfoyle-park-sa/8431103>

Unit 10, 11 Ash Street, Aberfoyle Park



This drawing is for illustration purposes only
(Drawing is not to scale)

The drawing and the information contained is not intended to be part of any contract. All measurements are approximate and details intended to be relied upon should be independently verified.

ESTIMATE OF LIVING AREA
80.99 Square metres/ 8.70 Squares

Desk Top Image (V1012-144)