




MAGAIN



26 Overland Crescent SHEIDOW PARK SA

3  2  2 

Call Danielle Comer for viewing times.

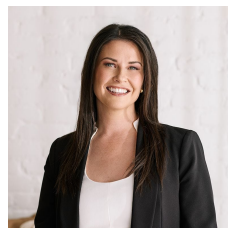
Whether you are just starting up or slowing down this fantastic three bedroom, 2002 built home is sure to tick all the boxes.

Offering a generous size master bedroom complete with walk in robe and ensuite, built in robes to the two bedrooms, formal lounge & dine, stylish kitchen with dishwasher & walk in pantry overlooks the homes casual meals & family living.

Outside there is plenty of room for the children to play and pets to roam in the low maintenance yard & paved entertaining area.

[For full version visit the website](https://www.magain.com.au)

Type : House
Building Size : 22 sqm
View : <https://www.magain.com.au/property/26-overland-crescent-sheidow-park-sa/8431120>



Danielle Comer
08 8322 6111

