

MAGAIN



4 Grassdale Rise ABERFOYLE PARK SA

3  1  4 

Contact Stuart Costello for viewing times.

This picturesque family home on a huge 1016sqm (apx) block is what you've only been dreaming of.

This beautifully presented property, peacefully situated in the stunning Woodlea Estate, comprises of three bedrooms, two with built in robes, immaculately renovated two way bathroom, two separate living areas, brand new kitchen with state of the art stainless steel appliances (including a dishwasher), and an updated laundry. The home also features ducted reverse cycle heating and cooling and instant gas.

The spacious pitched outdoor entertaining area overlooks

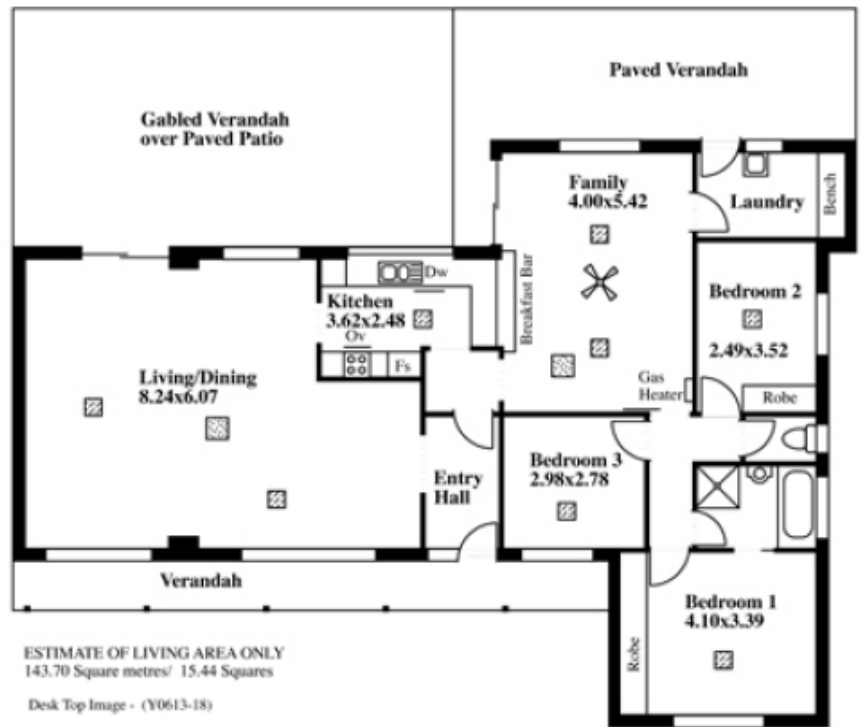
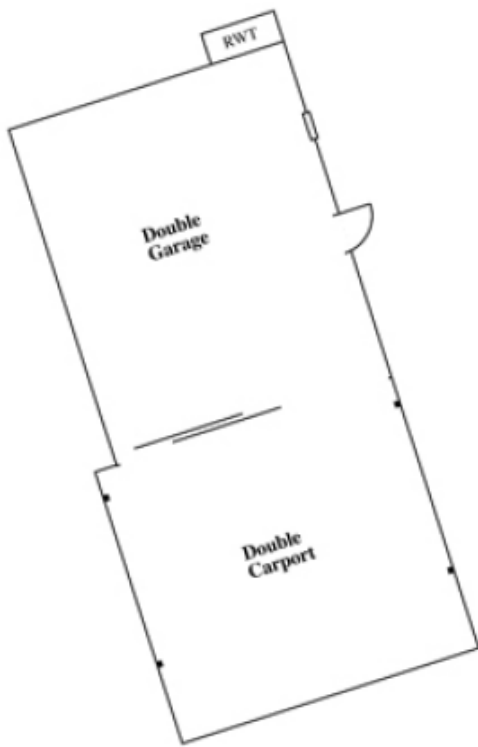
[For full version visit the website](#)

Type : House

View : <https://www.magain.com.au/property/4-grassdale-rise-aberfoyle-park-sa/8431169>

4 Grassdale Rise, Aberfoyle Park

*This drawing is for illustration purposes only
(Drawing is not to scale)
The drawing and the information contained is
not intended to be part of any contract. All
measurements are approximate and details intended
to be relied upon should be independently verified.*



LEGEND

-  Sky light
-  Air cond ducts

ESTIMATE OF LIVING AREA ONLY
143.70 Square metres/ 15.44 Squares
Desk Top Image - (Y0613-18)