

MAGAIN



39 Errington Street PLYMPTON SA

4 1 4

Contact Stuart Costello for viewing times.

This immaculate family home on a spacious 759 square metre corner allotment has so much to offer.

Situated close to schools, local shops and public transport this property is perfect for the growing family. Offering the potential for three or four bedrooms, this versatile and practical floor plan will most certainly meet your needs. The beautiful bathroom boasts retro terrazzo flooring, light filled living area with vintage gas heater and spacious well kept kitchen with gas cooker that overlooks the stunning yard. Extras include reverse cycle air conditioning and solar panels.

The corner block allows for plenty of off street parking with

[For full version visit the website](https://www.magain.com.au/property/39-errington-street-plympton-sa/8431175)

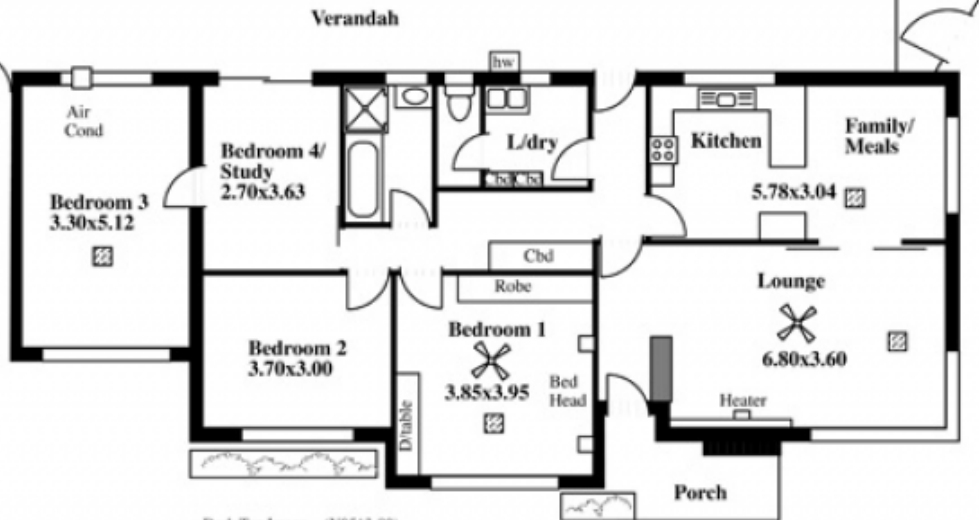
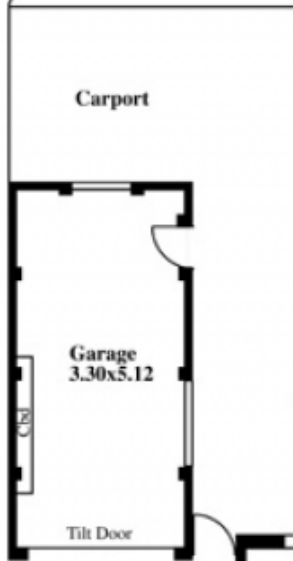
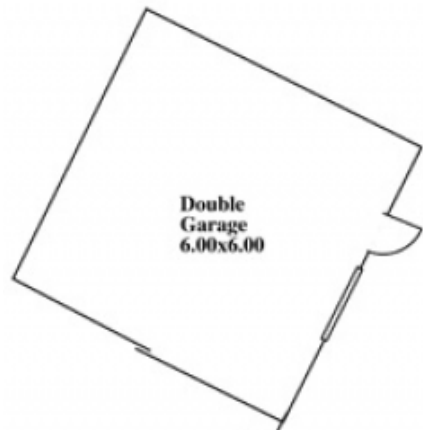
Type : House

View : <https://www.magain.com.au/property/39-errington-street-plympton-sa/8431175>

39 Errington Street, Plympton

This drawing is for illustration purposes only
(Drawing is not to scale)
The drawing and the information contained is not intended to be part of any contract. All measurements are approximate and details intended to be relied upon should be independently verified.

ESTIMATE OF AREA
HOUSE 130.70 Square metres/ 14.04 Squares
GARAGE 26.27 Square metres/ 2.82 Squares
TOTAL 156.97 Square metres/ 16.86 Squares



Desk Top Image - (Y0513-89)