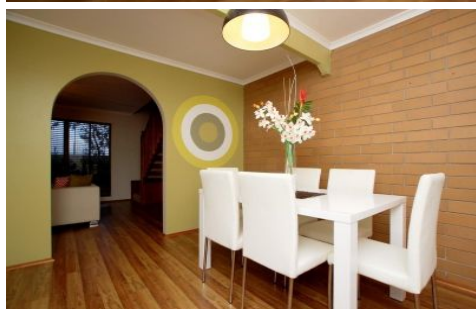


# MAGAIN



13-18 Windsor Avenue CLOVELLY PARK SA

3 1 1

Contact Stuart Costello for viewing times.

what more could you ask for? This two-storey, modern townhouse situated in a quiet group in a convenient location. Close to Flinders University, Flinders Medical Centre and the Tonsley train line currently under development.

Upstairs boasts three spacious bedrooms, one with a built in robe and an incredibly spacious bathroom with new shower. Downstairs you'll find a great amount of living space, with an open plan living and dining area, new flooring, brand new kitchen with dishwasher, second toilet, reverse cycle heating and cooling and a private courtyard with clothes line and garden shed.

[For full version visit the website](https://www.magain.com.au/property/13-18-windsor-avenue-clovelly-park-sa/8431227)

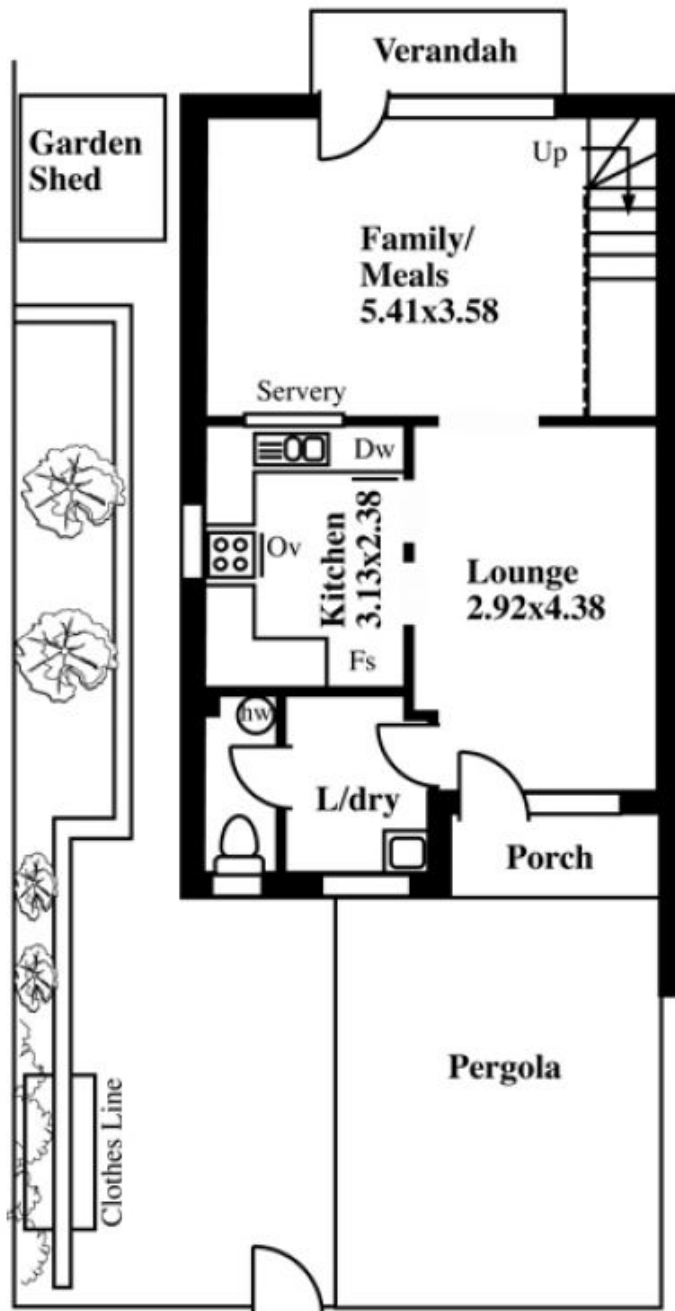
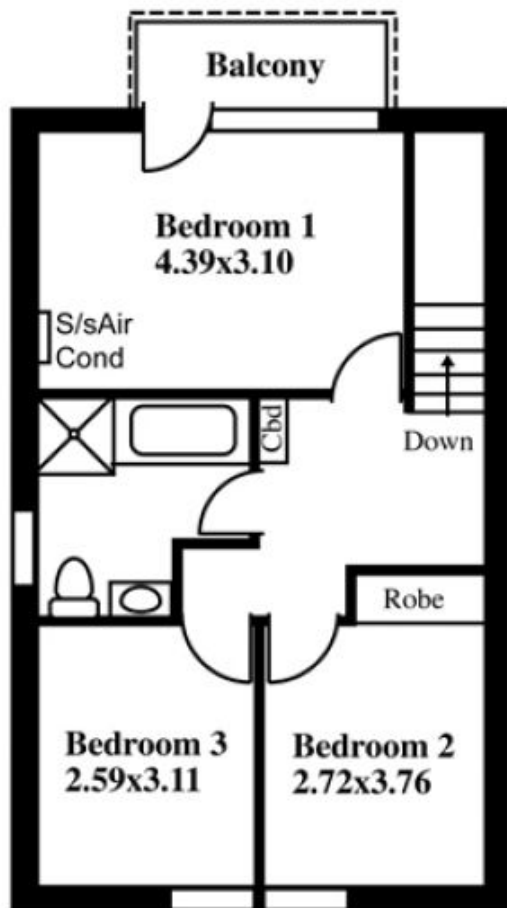
**Type** : House  
**Building Size** : 13 sqm  
**View** : <https://www.magain.com.au/property/13-18-windsor-avenue-clovelly-park-sa/8431227>

# Unit 13, 18 Windsor Avenue, Clovelly Park

This drawing is for illustration purposes only  
(Drawing is not to scale)

The drawing and the information contained is not intended to be part of any contract. All measurements are approximate and details intended to be relied upon should be independently verified.

Reserve



## ESTIMATE OF AREA

### HOUSE

UPSTAIRS 55.56 Square metres/ 5.97 Squares  
GROUND FLOOR 53.35 Square metres/ 5.73 Squares

TOTAL 108.91 Square metres/ 11.70 Squares

Desk Top Image - (Y0813-40)