




MAGAIN



9 Daws Road MITCHELL PARK SA

3  1  2 

Contact Stuart Costello for viewing times.

Such a picture perfect residence, with development potential (STCC).

Situated on approximately 800sqm in the City of Marion, zoned residential medium density R12. Boasting three bedrooms, plus a study, beautiful polished floorboards, ornate ceilings in immaculate condition, spacious bathroom & light filled provincial kitchen with a bay window overlooking the lush back yard.

Outside offers a private front yard, an enormous backyard, undercover entertaining area, and a double shed.

A great property with fantastic potential, not to be missed!

For more information or to register your interest contact Stuart Costello. (RLA 222182)

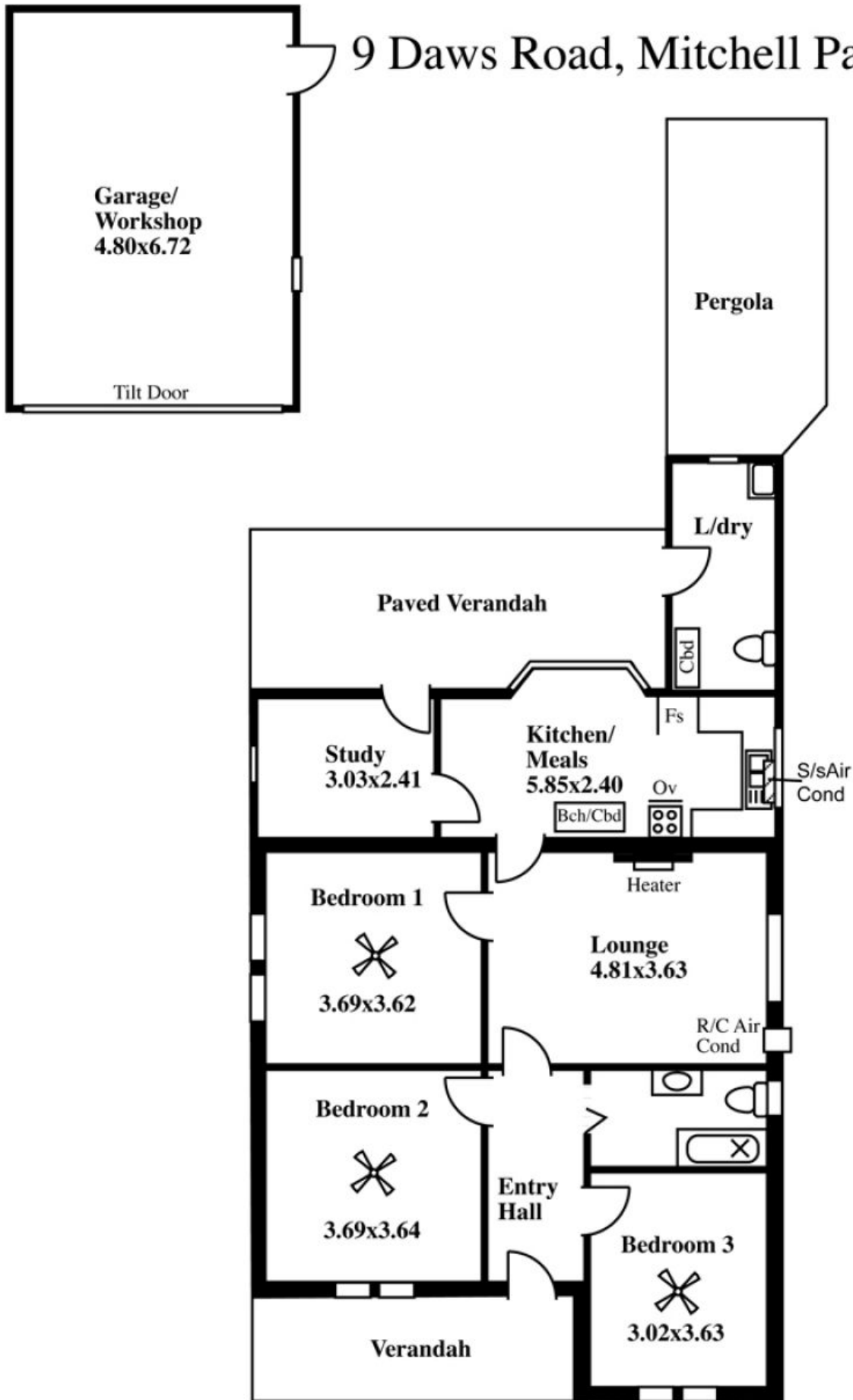
www.9daws.magain.com.au

[For full version visit the website](http://www.9daws.magain.com.au)

Type : House

View : <https://www.magain.com.au/property/9-daws-road-mitchell-park-sa/8431228>

9 Daws Road, Mitchell Park



This drawing is for illustration purposes only
(Drawing is not to scale)

The drawing and the information contained is not intended to be part of any contract. All measurements are approximate and details intended to be relied upon should be independently verified.

Desk Top Image - (Y0813-66)

ESTIMATE OF AREA

HOUSE 108.09 Square metres/ 11.61 Squares
GARAGE 32.36 Square metres/ 3.47 Squares

TOTAL 140.45 Square metres/ 15.08 Squares