

# MAGAIN



3-162 Bradley Grove MITCHELL PARK SA

2  1  1 

This lovely two storey townhouse is perfect for the first home owner or investor.

The home has fresh paint and floor coverings throughout giving it a nice modern feel. Downstairs offers the lounge area along with a neat kitchen, laundry and a toilet. The stairs leading to the upstairs area overlooks the spacious living area. There are 2 good size bedrooms with built in robes and bathroom.

You will be very happy with your own court yard at the front and rear of the home, and the yard is secure with a shed.

Do not miss out on this exciting opportunity, this little beauty will sell fast.

[For full version visit the website](https://www.magain.com.au/property/3162-bradley-grove-mitchell-park-sa/8431282)

**Type** : Townhouse  
**Building Size** : 9 sqm  
**View** : <https://www.magain.com.au/property/3162-bradley-grove-mitchell-park-sa/8431282>



**Travis Denham**  
08 8398 1494

# 3-162 Bradley Grove, Mitchell Park

## ESTIMATE OF AREA

HOUSE

GROUND FLOOR 41.07 Square metres/ 4.41 Squares

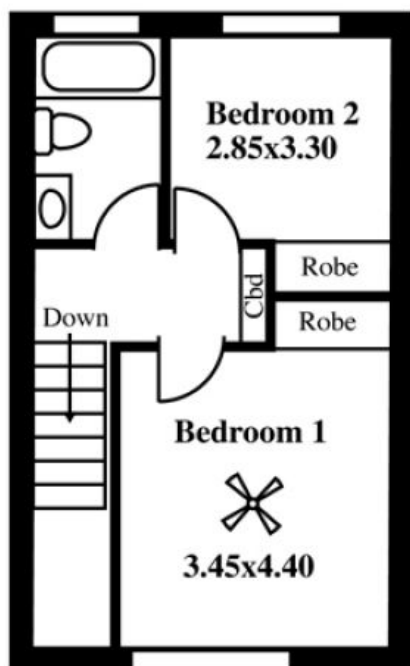
UPSTAIRS 41.07 Square metres/ 4.41 Squares

TOTAL 82.14 Square metres/ 8.82 Squares

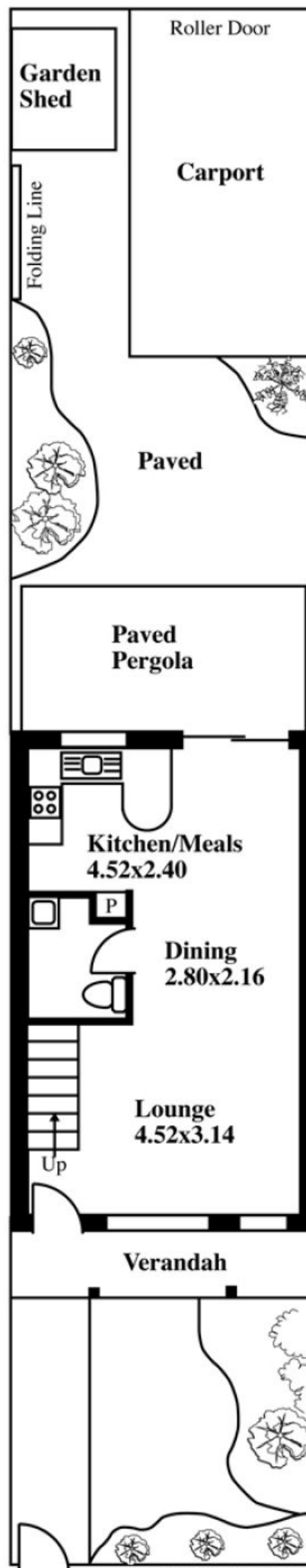
This drawing is for illustration purposes only

(Drawing is not to scale)

The drawing and the information contained is not intended to be part of any contract. All measurements are approximate and details intended to be relied upon should be independently verified.



UPSTAIRS



GROUND FLOOR