

MAGAIN



70 Lynlee Crescent HUNTFIELD HEIGHTS SA

3  1  1 

This property is perfect for the first home buyer wanting to enter the market or savvy investor.

The home is very cosy and will create many happy memories. All three bedrooms are of a good size meeting the needs of the busy modern day family. As you enter the home you will love the traditional L shaped lounge and dining room the flow into the kitchen.

As you step outside you will love the sheer size of the yard. There is plenty of room for the children to run around and enjoy.

The home is in a great location close to shops, schools and public transport making it a great choice when choosing a

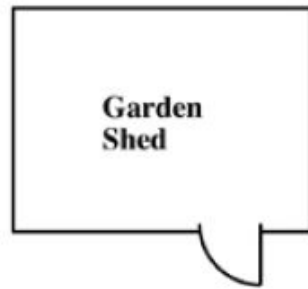
[For full version visit the website](https://www.magain.com.au/property/70-lynlee-crescent-huntfield-heights-sa/8431291)

Type : House
Building Size : 11 sqm
View : <https://www.magain.com.au/property/70-lynlee-crescent-huntfield-heights-sa/8431291>



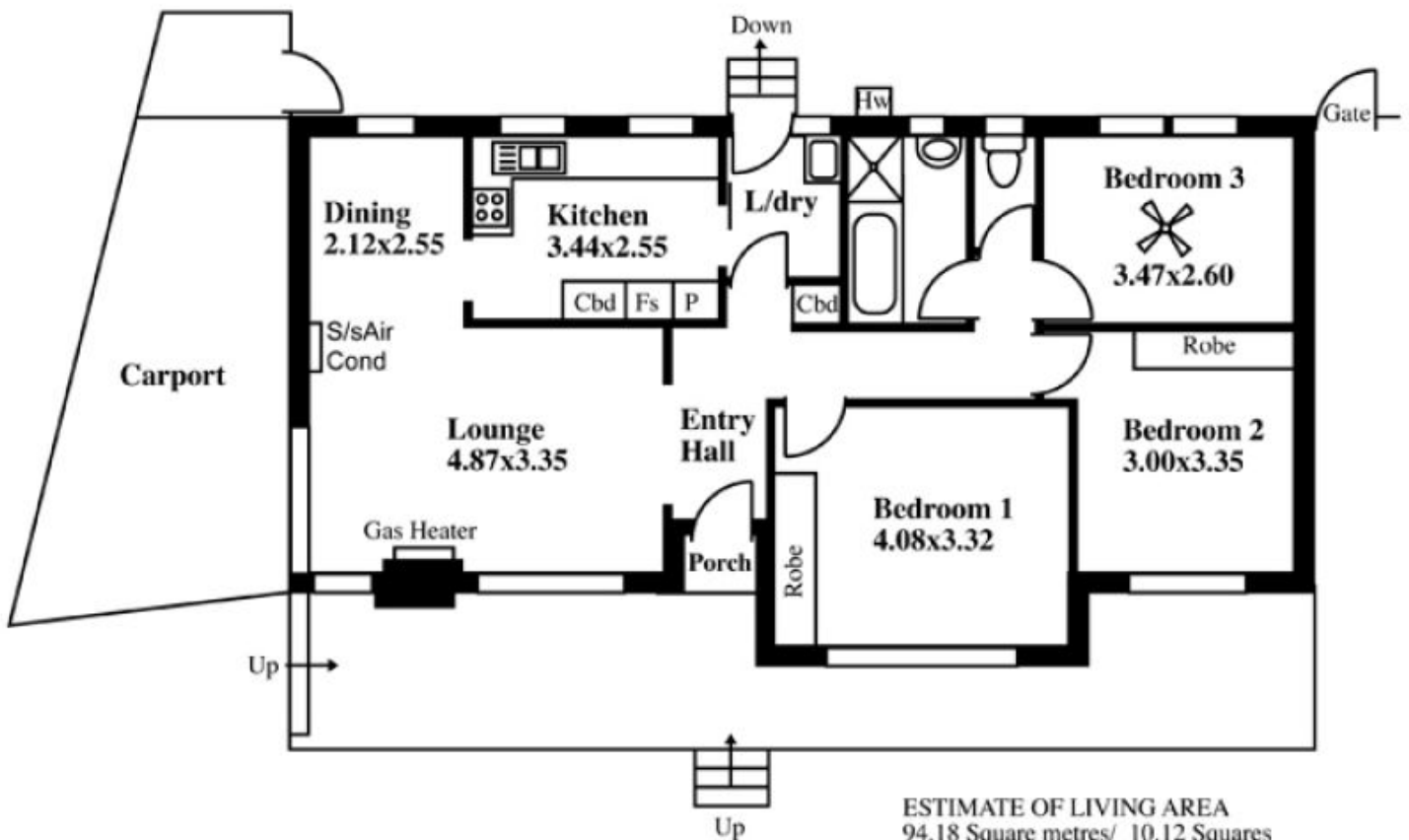
Travis Denham
08 8398 1494

70 Lynlee Crescent, Huntfield Heights



This drawing is for illustration purposes only
(Drawing is not to scale)

The drawing and the information contained is not intended to be part of any contract. All measurements are approximate and details intended to be relied upon should be independently verified.



ESTIMATE OF LIVING AREA
94.18 Square metres/ 10.12 Squares
Desk Top Image - (Y0114-07)