

MAGAIN



20A Spy Glass Hill Circuit SEAFORD RISE SA

3  2  1 

Contact Stuart Costello for viewing times. This single storey, well laid out, no maintenance 2009 Fairmont home is perfect for either the young family or those wishing to take things a little easier. Inside greets you with stunning decor, a new, well equipped kitchen, with gas cooking, looking over the open plan living and dining area.

It's master bedroom has views out of the lovely bay window with a walk in robe and ensuite. It has two further bedrooms (one can be used as a study) a beautiful spacious bathroom and generous laundry. For your comfort the property also has two heating and cooling split systems, one in the open plan living area and one in the master bedroom. Outside there is a courtyard garden with pergola for your entertaining where you can just sit back and relax with nothing to do. The property also has

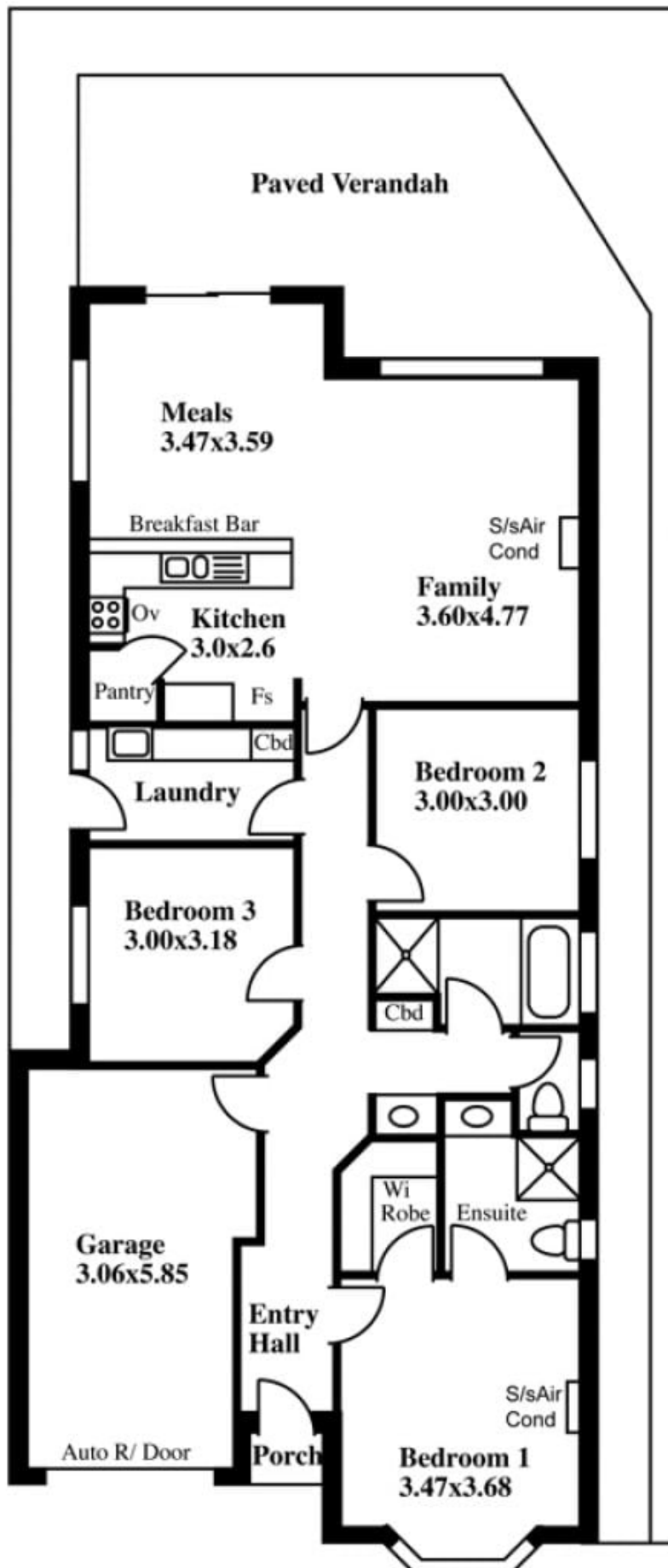
Type : House
Building Size : 14 sqm
Land Size : 308 sqm
View : <https://www.magain.com.au/property/20a-spy-glass-hill-circuit-seaford-rise-sa/8431313>

[For full version visit the website](https://www.magain.com.au)

<https://www.magain.com.au>
Magain Real Estate

Shop 3, Happy Valley Shopping Centre, 50 Kenihans H
08 8322 6111

20a Spy Glass Hill Circuit, Seaford Rise



This drawing is for illustration purposes only
(Drawing is not to scale)
The drawing and the information contained is not intended to be part of any contract. All measurements are approximate and details intended to be relied upon should be independently verified.

ESTIMATE OF AREA
138.56 Square metres/ 14.89 Squares
(Including Garage)

Desk Top Image - (Y0813-09)