




# MAGAIN



6 Harbour Street SHEIDOW PARK SA

3  2  2 

Call Danielle Comer for viewing times.

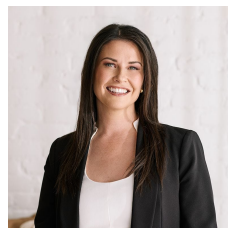
If it is style that you want than this elegant home is the one for you! Situated in the heart of Sheidow Park and close to all amenities including schools, shops, transport and even the beach you can't ask for more than this home has to offer.

This 2005 built property boasts three sizeable bedrooms, master suite complete with an ensuite & walk in robe and bedroom two & three with handy built in robes.

With quality shown throughout this home you will find all the must haves are here. The spacious kitchen with dishwasher and walk in pantry overlooks the family living

[For full version visit the website](https://www.magain.com.au/property/6-harbour-street-sheidow-park-sa/8431379)

**Type** : House  
**Building Size** : 19 sqm  
**Land Size** : 450 sqm  
**View** : <https://www.magain.com.au/property/6-harbour-street-sheidow-park-sa/8431379>



**Danielle Comer**  
08 8322 6111

6 Harbour Street, Sheidow Park, South Australia.



**Picture intended as a reference only.** Any specific measurements required should be obtained by an independent surveyor.