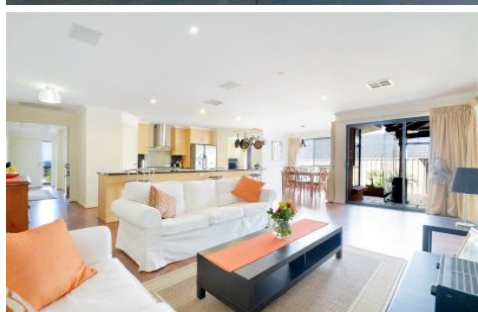


MAGAIN



2 Kingston Circuit SEAFORD RISE SA

4  2  2 

Please contact Danielle Comer for viewing times

Built in 2008 this near new and delightful modern four bedroom home will appeal especially to the growing family. Offering great street appeal and a wonderful outlook within a sought after location this home is sure to impress.

Inside this fabulous property the master suite boasts sizeable walk in robe and ensuite, bedroom two & three with handy built in robes and bedroom four also offering a spacious walk in robe. A large elegant open plan living area is complimented by the spacious and modern kitchen with dishwasher and ample cupboard and functional bench space along with a walk in pantry. This sensational hub of the home also leads to the formal dine or study. Enjoy your

[For full version visit the website](https://www.magain.com.au/property/2-kingston-circuit-seaford-rise-sa/8431451)

Type : House
Building Size : 25 sqm
Land Size : 547 sqm
View : <https://www.magain.com.au/property/2-kingston-circuit-seaford-rise-sa/8431451>



Danielle Comer
08 8322 6111

2 Kingston Circuit Seaford Rise, South Australia.



Picture intended as a reference only. Any specific measurements required should be obtained by an independent surveyor.