

MAGAIN



17 Crossdale Drive ABERFOYLE PARK SA

4 2 2

Contact Travis Denham or Craig Thomson for viewing times.

If quality, elegance and style, is what you are looking for in a home, then you need look no further. Set in the prestigious Woodland Ridge on a quiet no through road, you can enjoy the peace and tranquillity this beautiful part of the world offers, not to mention your very own spectacular views.

As you enter this delightful home you will be greeted by the exquisite formal lounge and dining area, featuring an abundance of natural light, complete with French doors that open up to the front patio area, to show off that fantastic view. The home features ducted reverse cycle air

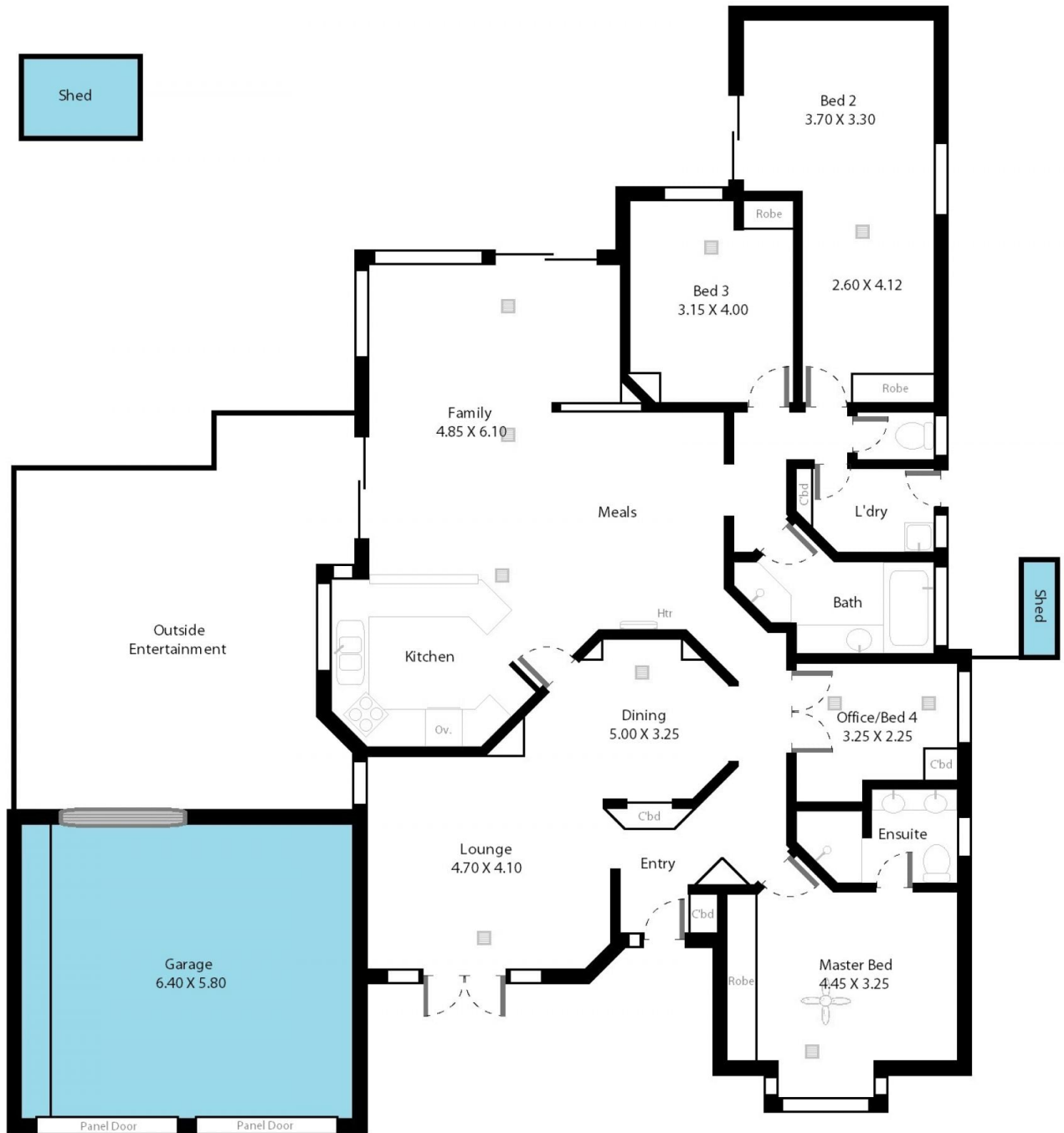
[For full version visit the website](https://www.magain.com.au/property/17-crossdale-drive-aberfoyle-park-sa/8431554)

Type : House
Building Size : 22 sqm
Land Size : 798 sqm
View : <https://www.magain.com.au/property/17-crossdale-drive-aberfoyle-park-sa/8431554>



Travis Denham
08 8398 1494

17 Crossdale Drive Aberfoyle Park, South Australia.



Picture intended as a reference only. Any specific measurements required should be obtained by an independent surveyor.