

MAGAIN



5 Overland Crescent SHEIDOW PARK SA

4 2 2

Please contact Danielle Comer for viewing times.

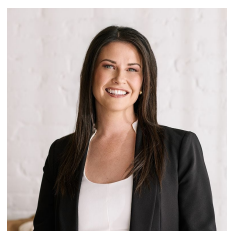
A simply delightful four bedroom home peacefully situated on a quiet family friendly street.

With an abundance of space throughout this quality residence boasts two separate living areas. A spacious formal lounge towards the front of the home and an open plan family living, dine and modern kitchen with walk in pantry and dishwasher at the rear.

The master suite is complete with a sizable walk in robe and ensuite. Bedroom two and three have built in robes and are also well sized. The main bathroom is very neat and tidy with a large bath and shower.

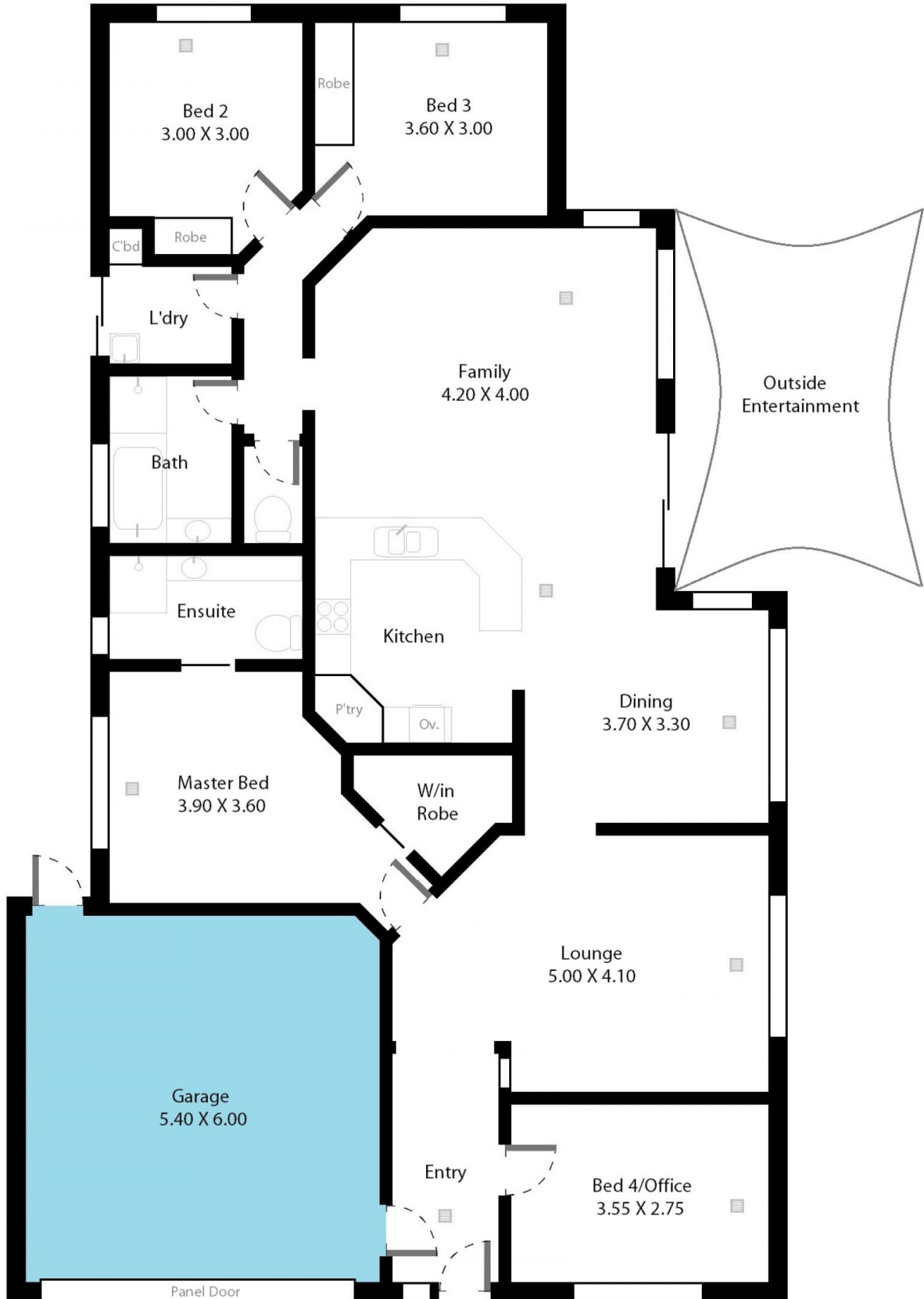
[For full version visit the website](https://www.magain.com.au/property/5-overland-crescent-sheidow-park-sa/8431569)

Type : House
Building Size : 19 sqm
Land Size : 450 sqm
View : <https://www.magain.com.au/property/5-overland-crescent-sheidow-park-sa/8431569>



Danielle Comer
08 8322 6111

5 Overland Crescent Sheidow Park, South Australia.



Picture intended as a reference only. Any specific measurements required should be obtained by an independent surveyor.