

# MAGAIN



43 Unity Drive SHEIDOW PARK SA

4  2  2 

Contact Stuart Costello for viewing times.

Located in the prestigious Southbank Estate this delightful 2002 built Rossdale home is sure to impress. Offering four spacious bedrooms, ensuite with spa and walk in robe, built in robes, two huge living areas offering both casual and formal living, spacious and practical kitchen with all the modern features, ducted reverse cycle air-conditioning, and all of this wrapped up in a very practical layout.

Outside offers a double garage with drive through access, a large all weather entertaining area, and a huge terraced back yard perfect for the whole family to enjoy.

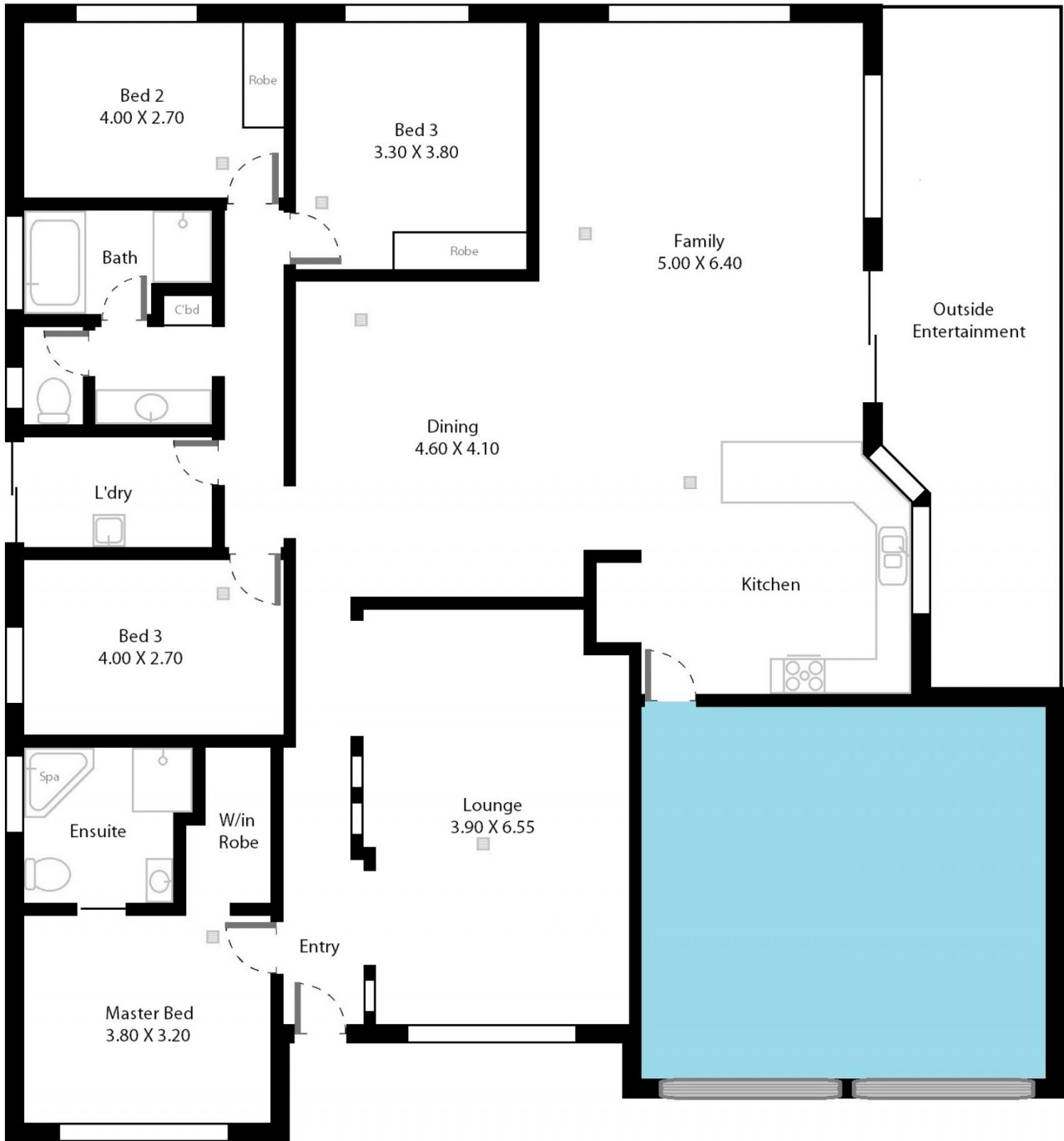
Peacefully positioned in such a great sought after area, for more information or to register your interest, contact Stuart Costello. (RLA 222182)

[www.43unity.magain.com.au](http://www.43unity.magain.com.au)

[For full version visit the website](http://www.43unity.magain.com.au)

**Type** : House  
**Building Size** : 24 sqm  
**Land Size** : 748 sqm  
**View** : <https://www.magain.com.au/property/43-unity-drive-sheidow-park-sa/8431573>

43 Unity Drive Sheidow Park, South Australia.



Picture intended as a reference only. Any specific measurements required should be obtained by an independent surveyor.