

# MAGAIN



## 35 Horseshoe Drive ABERFOYLE PARK SA

4 2 2

Please contact Travis Denham or Craig Thomson for viewing times.

This beautiful, two storey, four bedroom home is a pleasure to present. Situated in a fantastic pocket of Aberfoyle Park, the sweet life awaits you.

Inside this spectacular home you will find the great open plan living, dining and kitchen area down stairs, complete with fireplace, a gas wall heater and ducted evaporative cooling throughout, to ensure your comfort all year round. The quality kitchen features a dishwasher, built in pantry, breakfast bar, plenty of cupboard/bench space and leads through to the immaculate formal dining and living room, the ideal area for entertaining.

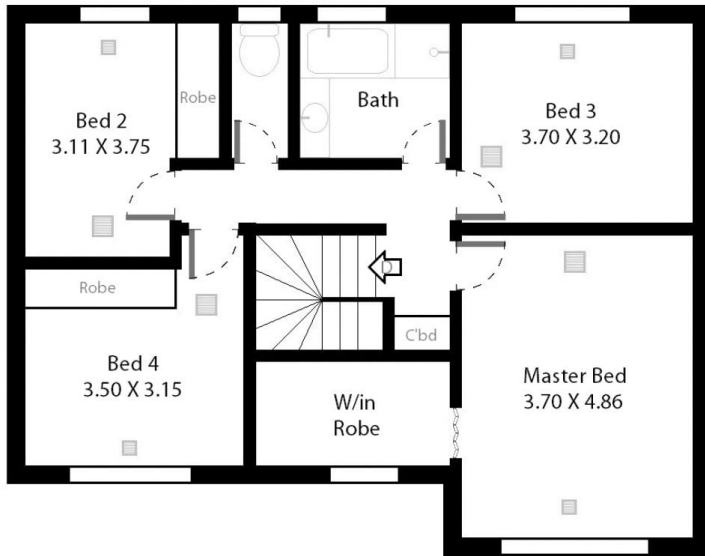
[For full version visit the website](https://www.magain.com.au/property/35-horseshoe-drive-aberfoyle-park-sa/8431621)

**Type** : House  
**Building Size** : 22 sqm  
**Land Size** : 730 sqm  
**View** : <https://www.magain.com.au/property/35-horseshoe-drive-aberfoyle-park-sa/8431621>

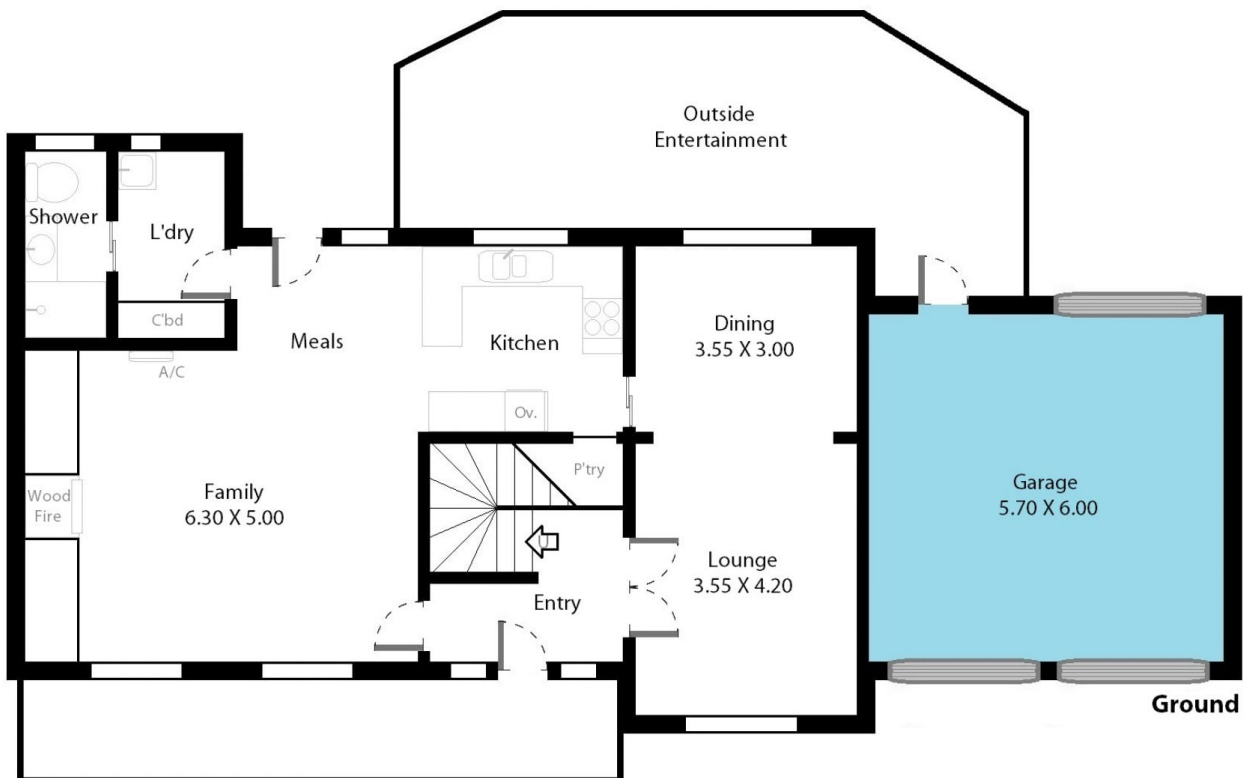
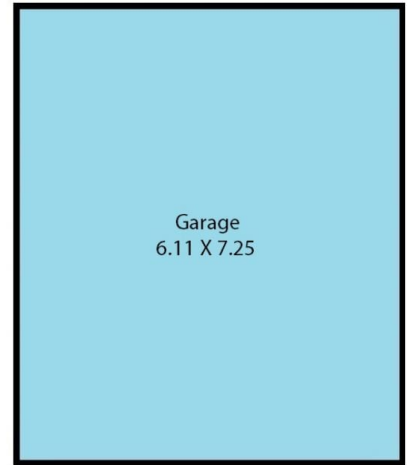


**Travis Denham**  
08 8398 1494

35 Horseshoe Drive Aberfoyle Park, South Australia.



Second Level



Ground Floor

Picture intended as a reference only. Any specific measurements required should be obtained by an independent surveyor.