

MAGAIN



2 Moss Court ALDINGA BEACH SA

4 2 2

Contact Stuart Costello for viewing times.

This 2009 Rossdale home is a delight to present, with its sandstone and red brick front on a large 693sqm block.

Once inside you immediately experience the feeling of space with beautiful direct stick timber kari and jarrah floors, double width entry and vaulted high ceilings. It also adds a touch of luxury with its decorative ornate archways and cornices. To your right the double doors open into the master bedroom with its large walk in robe and modern oversized en suite, with double vanity blackwood timber cupboards to ease that early morning rush.

There is a formal lounge to the front and a very generous family room to the rear of the property with huge picture windows and sliding doors to the garden. The beautiful kitchen has marble splash backs, black galaxy granite

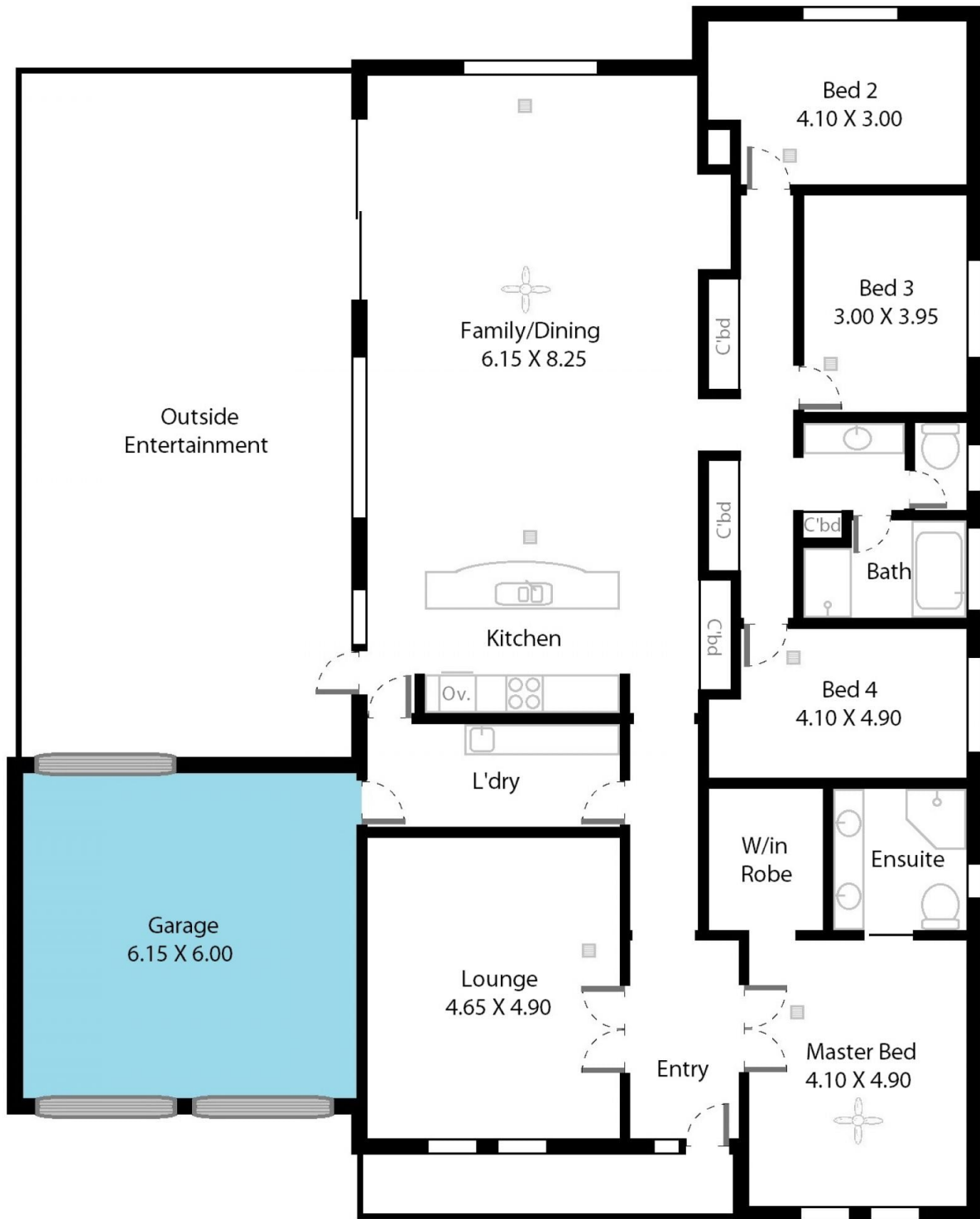
Type : House
Building Size : 26 sqm
Land Size : 693 sqm
View : <https://www.magain.com.au/property/2-moss-court-aldinga-beach-sa/8431676>

[For full version visit the website](https://www.magain.com.au)

<https://www.magain.com.au>
Magain Real Estate

Shop 3, Happy Valley Shopping Centre, 50 Kenihans H
08 8322 6111

2 Moss Court Aldinga, South Australia.



Picture intended as a reference only. Any specific measurements required should be obtained by an independent surveyor.