

MAGAIN



14 Nedland Crescent PORT NOARLUNGA SOUTH SA

3  2  1 

Contact Travis Denham or Craig Thomson for viewing times.

This fantastic family home is set in a great location close to local shops, quality schools, public transport, only a short walk to the beach and much more. It is a must see for first home buyers or those seeking a fantastic investment opportunity.

Offering 3 size-able bedrooms throughout, each room is fitted with carpet flooring, ceiling fans, and built in robes. The master suite is ideally complete with a built in robe and ensuite.

To ensure your comfort all year round the home is fitted

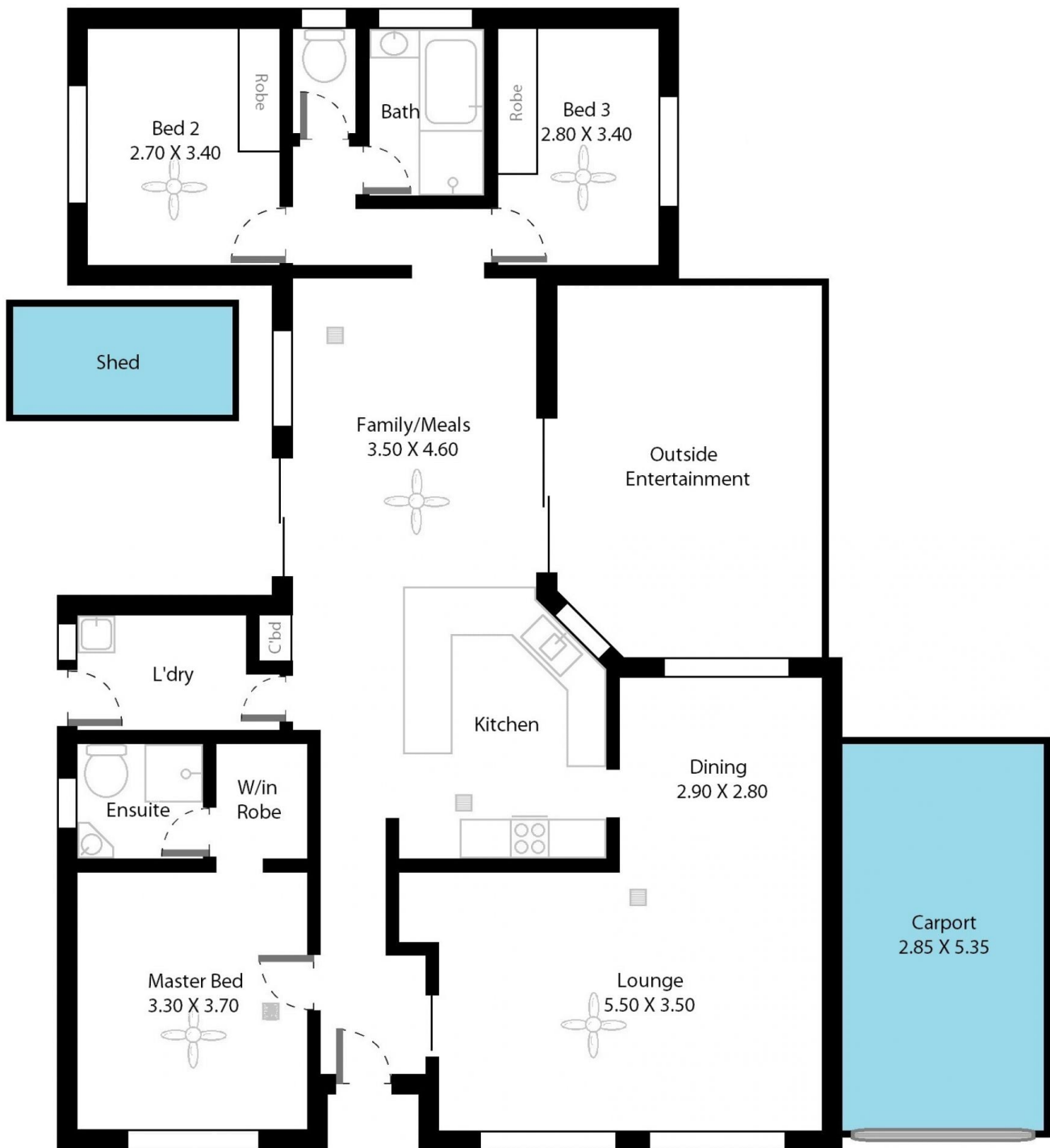
[For full version visit the website](https://www.magain.com.au)

Type : House
Building Size : 15 sqm
Land Size : 359 sqm
View : <https://www.magain.com.au/property/14-nedland-crescent-port-noarlunga-south-sa/8431696>



Travis Denham
08 8398 1494

14 Nedland Crescent Port Noarlunga South, South Australia.



Picture intended as a reference only. Any specific measurements required should be obtained by an independent surveyor.