

MAGAIN



52 Berrima Road SHEIDOW PARK SA

4 2 2

Contact Travis Denham and Craig Thomson for viewing times.

This beautifully presented family home is situated on a generous allotment of approx. 936sqm. Ideally located close to local shops, quality schools, public transport, access to the southern expressway, parks and more. It is a must see for the growing family, and is sure to please with its many updates throughout.

The home offers 4 size-able bedrooms throughout, each fitted with new quality carpet flooring. The master suite ideally offers a large walk in robe and a beautifully updated ensuite, with floor to ceiling tiles. Bedrooms 2 and 3 feature spacious built in robes. The bedrooms are serviced by the

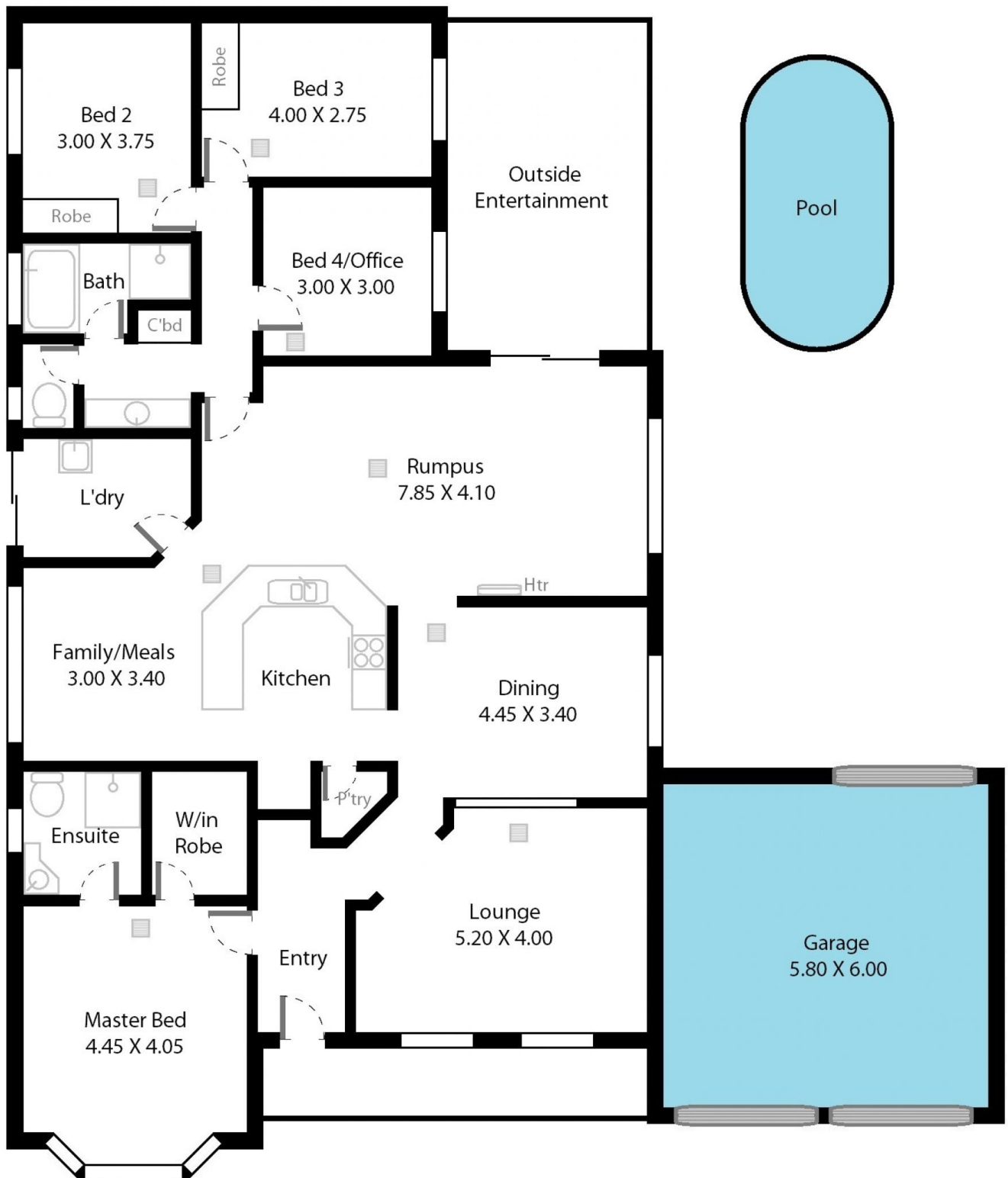
[For full version visit the website](https://www.magain.com.au/property/52-berrima-road-sheidow-park-sa/8431716)

Type : House
Building Size : 22 sqm
Land Size : 936 sqm
View : <https://www.magain.com.au/property/52-berrima-road-sheidow-park-sa/8431716>



Travis Denham
08 8398 1494

52 Berrima Road Sheidow Park, South Australia.



Picture intended as a reference only. Any specific measurements required should be obtained by an independent surveyor.