

MAGAIN



7 Curlew Street SHEIDOW PARK SA

4 2 1

Please contact Danielle Comer for viewing times.

Tucked away amongst other quality built homes in the highly popular Southbank Estate is this gorgeous home - waiting to be all yours.

You will be thoroughly impressed by a home with a high level of charm, beginning with great kerbside appeal and offering four well sized bedrooms including a very spacious master complete with ensuite and walk-in robe, bedrooms two and three also with built in robes. This versatile and unique floorplan offers multiple living areas including spacious family living and open casual living and meals. A pristine kitchen complete with elegant stainless steel appliances and ample cupboard and bench space

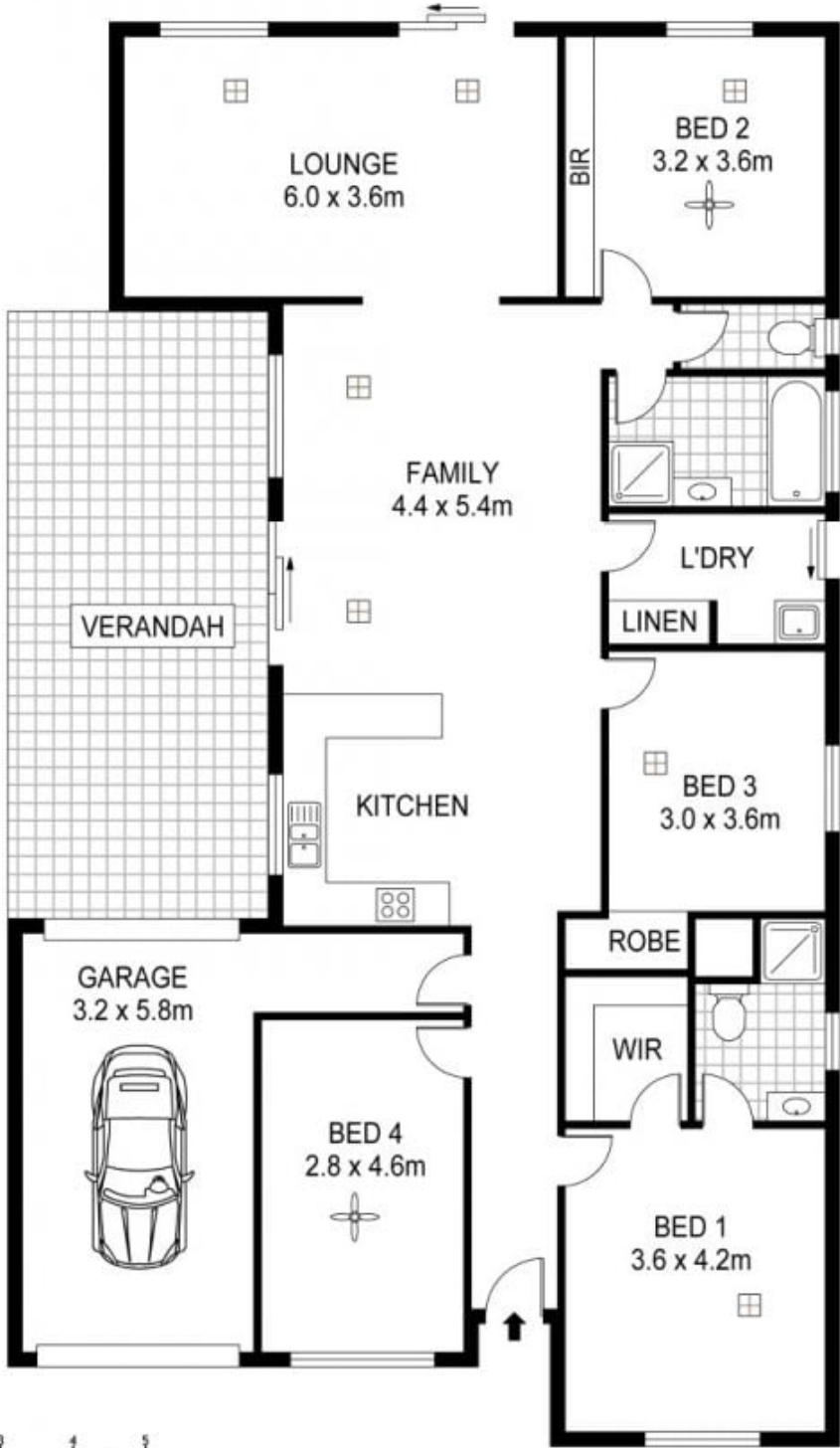
[For full version visit the website](https://www.magain.com.au/property/7-curlew-street-sheidow-park-sa/8431727)

Type : House
Building Size : 18 sqm
Land Size : 363 sqm
View : <https://www.magain.com.au/property/7-curlew-street-sheidow-park-sa/8431727>



Danielle Comer
08 8322 6111

SHED
2.4 x 1.6m



Scale in metres. Indicative only. Dimensions are approximate. All information contained herein is gathered from sources we believe to be reliable. However we cannot guarantee its accuracy and interested persons should rely on their own enquiries

INT : 145m²

7 Curlew Street, Sheidow Park