

MAGAIN



2-204B Diagonal Road WARRADALE SA

2  1  1 

Contact Ryan Bille for viewing times.

Nestled off diagonal road in a very well maintained group, this unit has been presented in immaculate condition. Whether you are looking to live in or invest this single storey unit is sure to impress.

Comprising of two spacious bedrooms, separate lounge room, kitchen with adjoining dining, bathroom and separate laundry. Freshly painted and new carpets, the unit also offers split R/C air-conditioning for year round comfort. Leading outside you are greeted with a neat, low maintenance living/garden area.

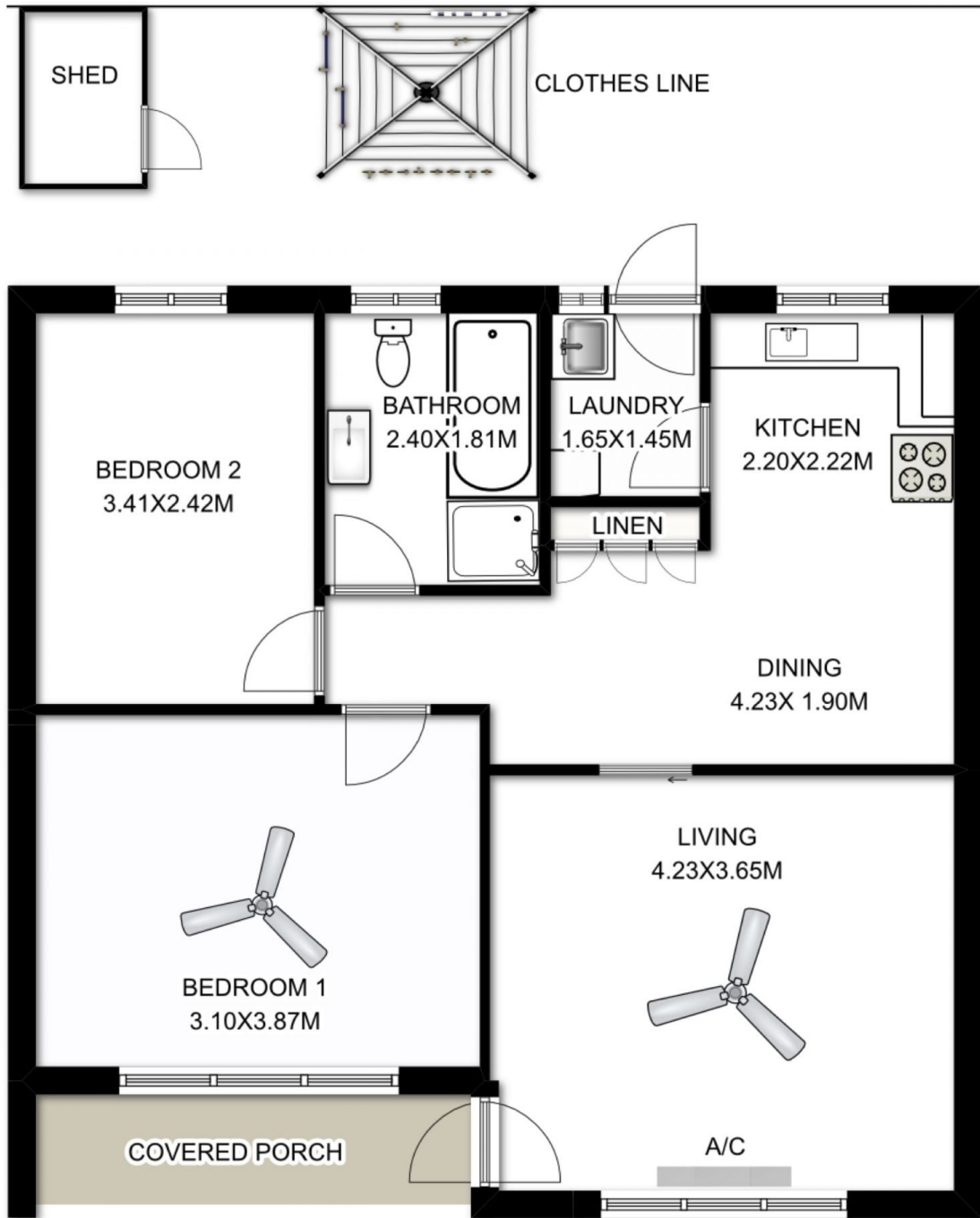
The property is in a highly sought after location, close to local shops (Westfield Marion), local schools, public transport, world class Aquatic centre and beaches;

[For full version visit the website](https://www.magain.com.au)

Type : House
Building Size : 7 sqm
View : <https://www.magain.com.au/property/2204b-diagonal-road-warradale-sa/8431739>

U2/204b DIAGONAL ROAD WARRADALE

TOTAL LIVING AREA APPROX 64.03M²



Please note. All care has been taken for accuracy in this drawing.
However, all measurements and details shown
are to be considered as approximate only and used strictly as a guide.