

MAGAIN



38A Scottish Avenue CLOVELLY PARK SA

4 2 1

Open cancelled due to being under contract.

Contact Travis Denham or Craig Thomson for viewing times.

This fantastic home is situated in a great location close to local shops, quality schools, public transport, only a short commute to Adelaide CBD and more. It is a must see for first home buyers, downsizers or those seeking a fantastic investment opportunity.

The home offers 4 size-able bedrooms throughout, the master suite is ideally complete with a large walk through robe and ensuite. Bedrooms 2 and 3 each feature built in robes and carpet flooring. The fourth bedroom is currently

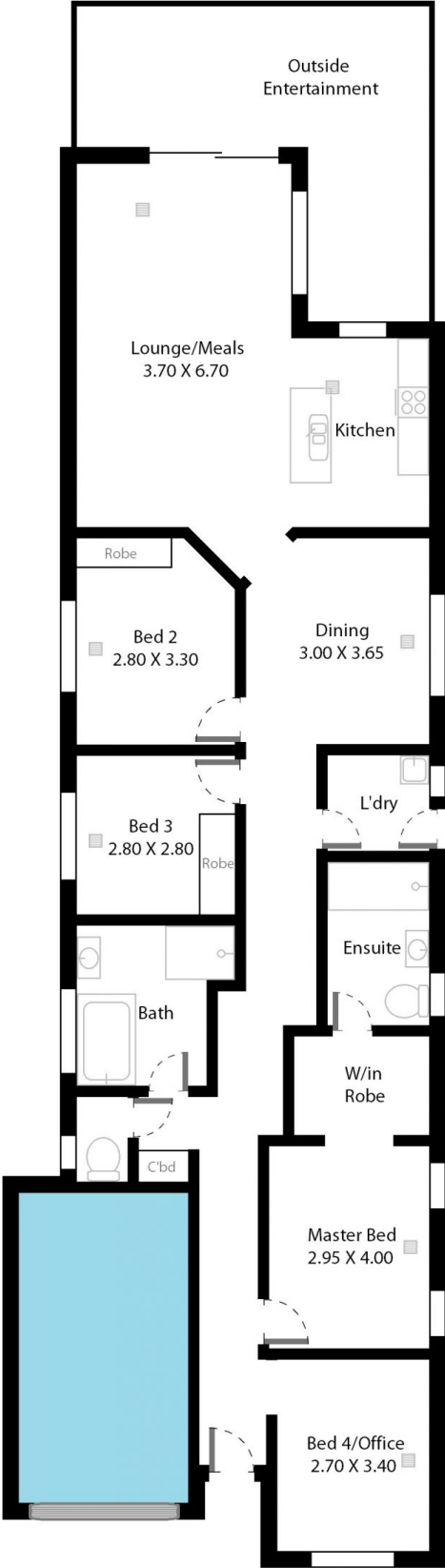
[For full version visit the website](https://www.magain.com.au/property/38-a-scottish-avenue-clovelly-park-sa/8431746)

Type : House
Building Size : 16 sqm
Land Size : 358 sqm
View : <https://www.magain.com.au/property/38-a-scottish-avenue-clovelly-park-sa/8431746>



Travis Denham
08 8398 1494

38a Scottish Avenue Clovelly Park, South Australia.



Picture intended as a reference only. Any specific measurements should be obtained by an independent surveyor.