

MAGAIN



14 Elizabeth Road CHRISTIE DOWNS SA

3  1  1 

Contact Travis Denham or Craig Thomson for viewing times.

This fantastic home is situated on a generous allotment of approx. 670sqm, set in a convenient location close to local shops, schools, public transport, access to the southern expressway and only a short drive to beautiful sandy beaches. It is a must see for first home buyers or those seeking a sound investment opportunity.

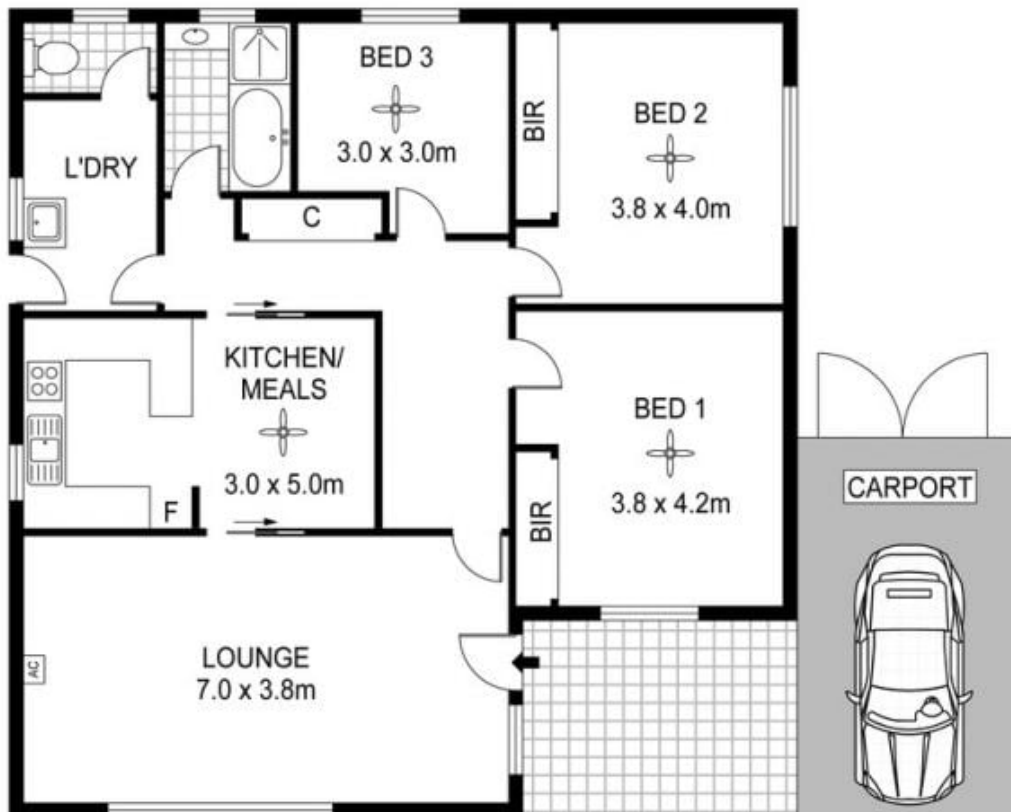
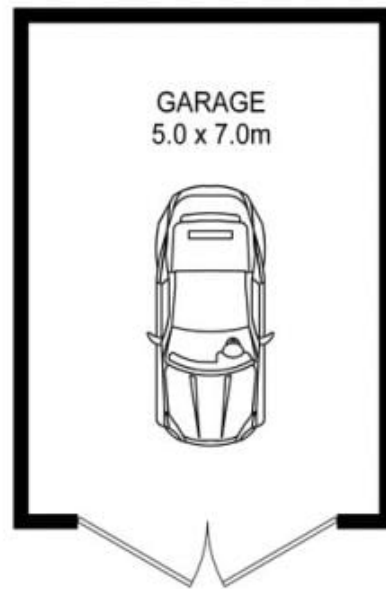
The home offers 3 size-able bedrooms throughout, each complete with a ceiling fan. The master and bed 2 are also fitted with large 3 door built in robes, carpet flooring and window roller shutters. The rooms are serviced by the updated bathroom, complete with floor to ceiling tiles and

[For full version visit the website](https://www.magain.com.au/property/14-elizabeth-road-christie-downs-sa/8431752)

Type : House
Building Size : 13 sqm
Land Size : 670 sqm
View : <https://www.magain.com.au/property/14-elizabeth-road-christie-downs-sa/8431752>



Travis Denham
08 8398 1494



Scale in metres. Indicative only. Dimensions are approximate. All information contained herein is gathered from sources we believe to be reliable. However we cannot guarantee its accuracy and interested persons should rely on their own enquiries.

INT : 109m²
 GARAGE : 35m²

14 Elizabeth Road, Christie Downs