

MAGAIN



180 Brodie Road MORPHETT VALE SA

3  1  2 

Contact Travis Denham or Craig Thomson for viewing times.

This superb home is situated on a generous allotment of approx. 690sqm and is ideally located close to local shops, quality schools, public transport, access to the southern expressway and more. It is a must see for first home buyers, growing families or those seeking a fantastic investment opportunity.

The home offers 3 size-able bedrooms, each featuring built in robes, quality carpet flooring and are serviced by the well-designed bathroom, with separate toilet for convenience.

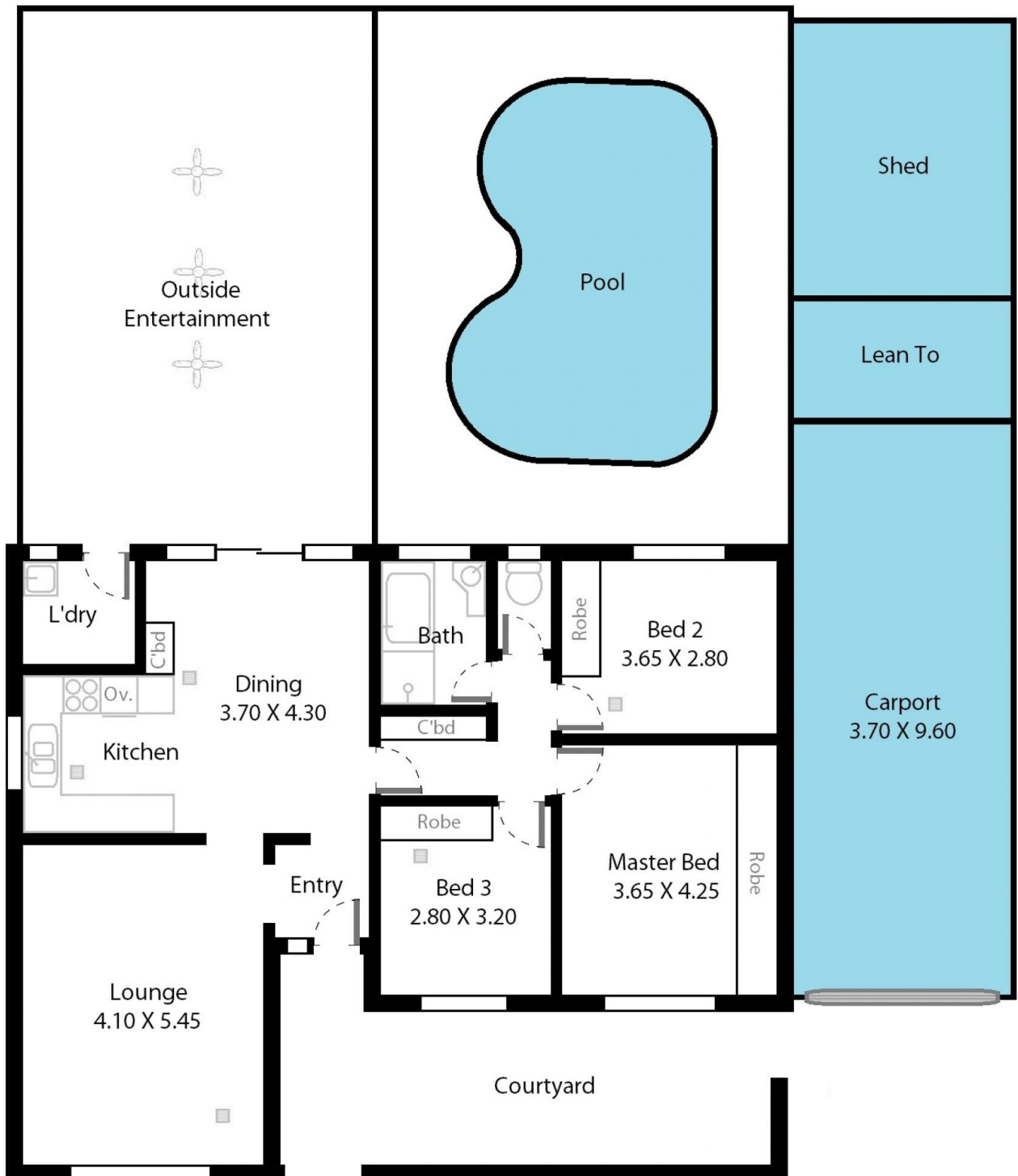
[For full version visit the website](https://www.magain.com.au/property/180-brodie-road-morphett-vale-sa/8431785)

Type : House
Building Size : 11 sqm
Land Size : 690 sqm
View : <https://www.magain.com.au/property/180-brodie-road-morphett-vale-sa/8431785>



Travis Denham
08 8398 1494

180 Brodie Road Morphett Vale, South Australia.



Picture intended as a reference only. Any specific measurements required should be obtained by an independent surveyor.