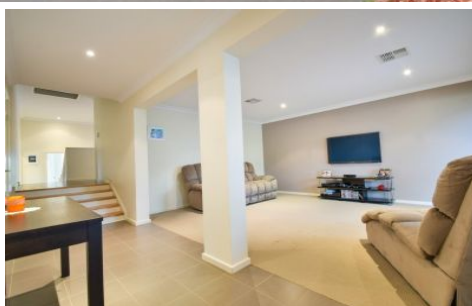


MAGAIN



9 Enginehouse Drive SHEIDOW PARK SA

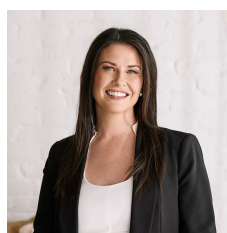
4 2 2

Please contact Danielle Comer for viewing times.

This stunning family home offers quality living at its best. Offering four large bedrooms, master suite boasting large double sink ensuite and spacious walk in robe. With superior fixtures and fittings throughout and every corner covered, this home is ready for you to just move in.

The striking feature door opens to the formal lounge and steps up to the sparkling kitchen with stainless steel appliances, chefs oven and range hood. The open plan casual living and dine opens to the huge balcony providing ample room to entertain guests and casually sip a cool white wine while taking in a fine a view, a lifestyle that many of us only get to dream of. Stepping down a level to

Type : House
Building Size : 29 sqm
Land Size : 678 sqm
View : <https://www.magain.com.au/property/9-enginehouse-drive-sheidow-park-sa/8431786>



Danielle Comer
08 8322 6111

[For full version visit the website](https://www.magain.com.au)

9 Engine House Drive Sheidow Park, South Australia.



Picture intended as a reference only. Any specific measurements required should be obtained by an independent surveyor.