

# MAGAIN



## 13 Mariner Drive SHEIDOW PARK SA

4  2  2 

Here is the perfect opportunity to move you and your family into the beautiful and sought after area of Sheidow Park, this home offers the perfect floorplan that incorporates formal and informal living areas.

Featuring four great sized bedrooms, master with a large walk in robe and ensuite, bedroom two and three with built in robes. Large formal lounge and dining upon entry, the spacious kitchen with dishwasher and walk in pantry overlooks informal meals area. Not short of any room, this superb residence also supports a large family living room with sliding door access to the backyard.

Step outdoors to an undercover pergola plus the beautifully manicured and completely established garden to

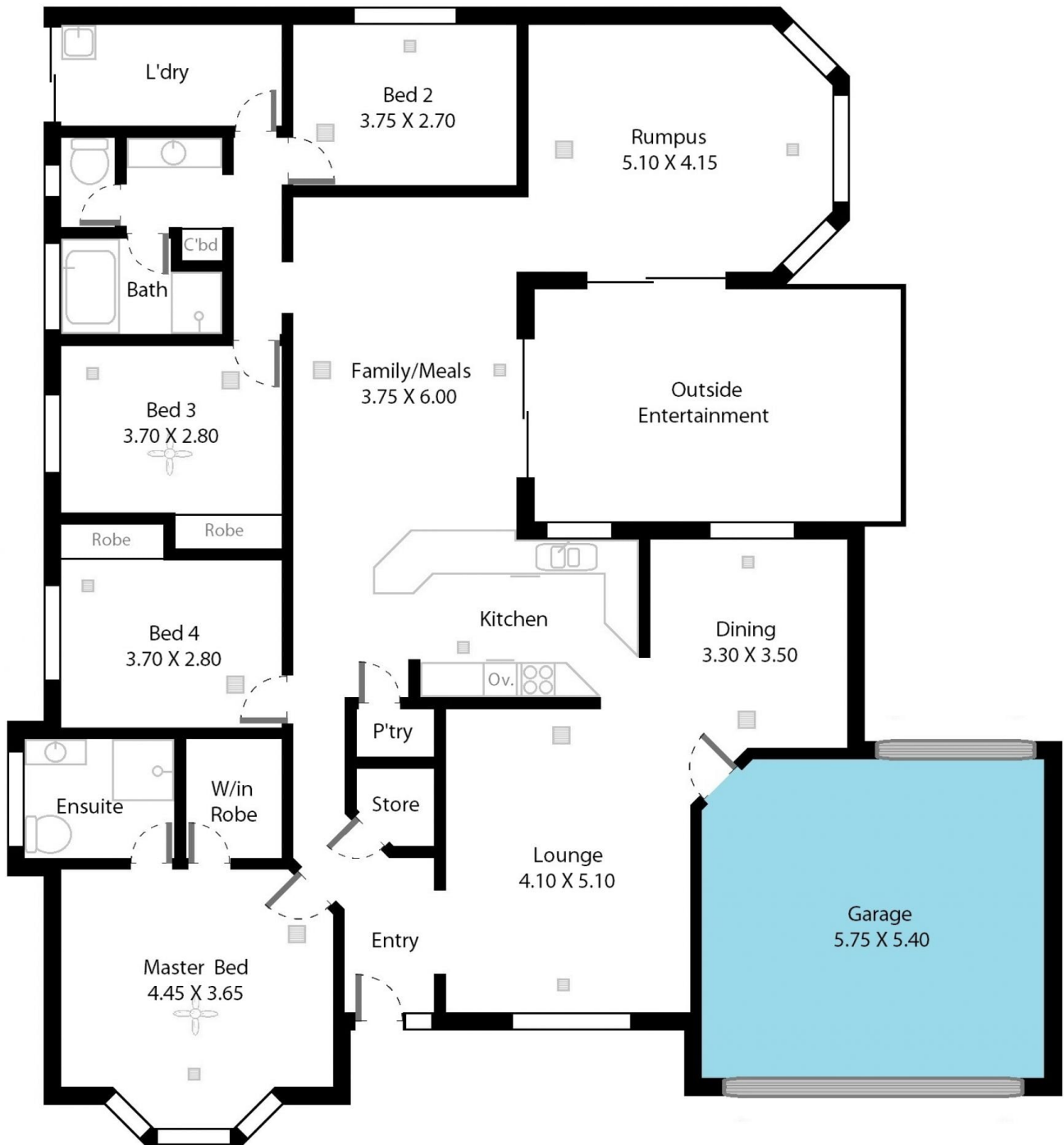
[For full version visit the website](#)

**Type** : House  
**Building Size** : 23 sqm  
**Land Size** : 600 sqm  
**View** : <https://www.magain.com.au/property/13-mariner-drive-sheidow-park-sa/8431792>



**Danielle Comer**  
08 8322 6111

13 Mariner Drive Sheidow Park, South Australia.



**Picture intended as a reference only.** Any specific measurements required should be obtained by an independent surveyor.