

MAGAIN



We want to keep our beautiful state,
and our vendors' homes safe.
So please wear a mask at
our open inspections.

magain
REAL ESTATE



19 Milton Street BEDFORD PARK SA

4 🚗 2 🚗 2 🚗

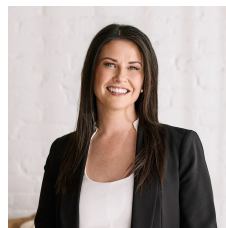
Please contact Danielle Comer or Rachael Farror for viewing times.

Situated on a huge 1170sqm (approx.) elevated allotment, and perfectly positioned to take advantage of the views all the way to the ocean, this spacious family home with approximately 204sqm of internal living has been sensibly built to make great use of the natural curves of the land. Seriously impressive, this two-story home offers a neutral palette, high ceilings and large windows showcasing the lovely views on offer, plus outdoors an entertainer's dream, complete with balcony and sparkling swimming pool - it really needs to be seen to be believed!!

Upon entrance to the home you are welcomed by a neat

[For full version visit the website](https://www.magain.com.au)

Type : House
Building Size : 26 sqm
Land Size : 1170 sqm
View : <https://www.magain.com.au/property/19-milton-street-bedford-park-sa/8431857>



Danielle Comer
08 8322 6111

<https://www.magain.com.au>
Magain Real Estate

Shop 3, Happy Valley Shopping Centre, 50 Kenihans H
08 8322 6111



Scale in metres. This drawing is for illustration purposes only. All measurements are approximate and details intended to be relied upon should be independently verified.

Produced by The Fotobase Group