

MAGAIN



3 Kerley Way NOARLUNGA DOWNS SA

3 2 3

Please contact Rachael Farror or Danielle Comer for viewing times.

Perfectly positioned to take advantage of the panoramic views across the Onkaparinga River Recreation Park, this lovely Fairmont built home with approx. 183sqm of internal living has been sensibly built to make great use of the natural curves of generous 1161sqm parcel of land - it really needs to be seen to be believed!

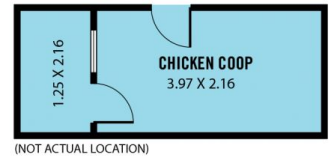
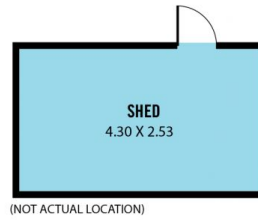
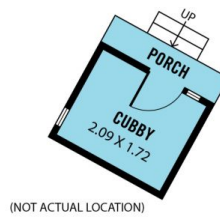
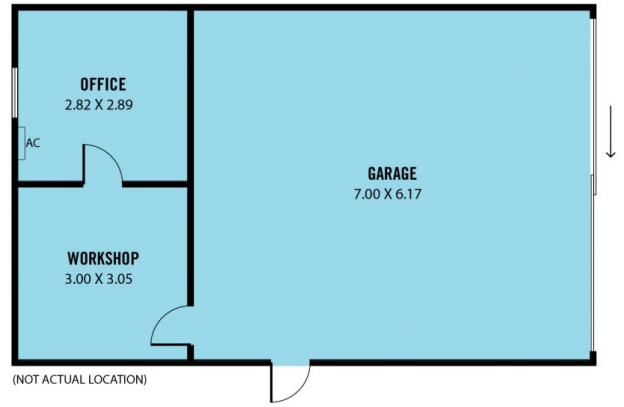
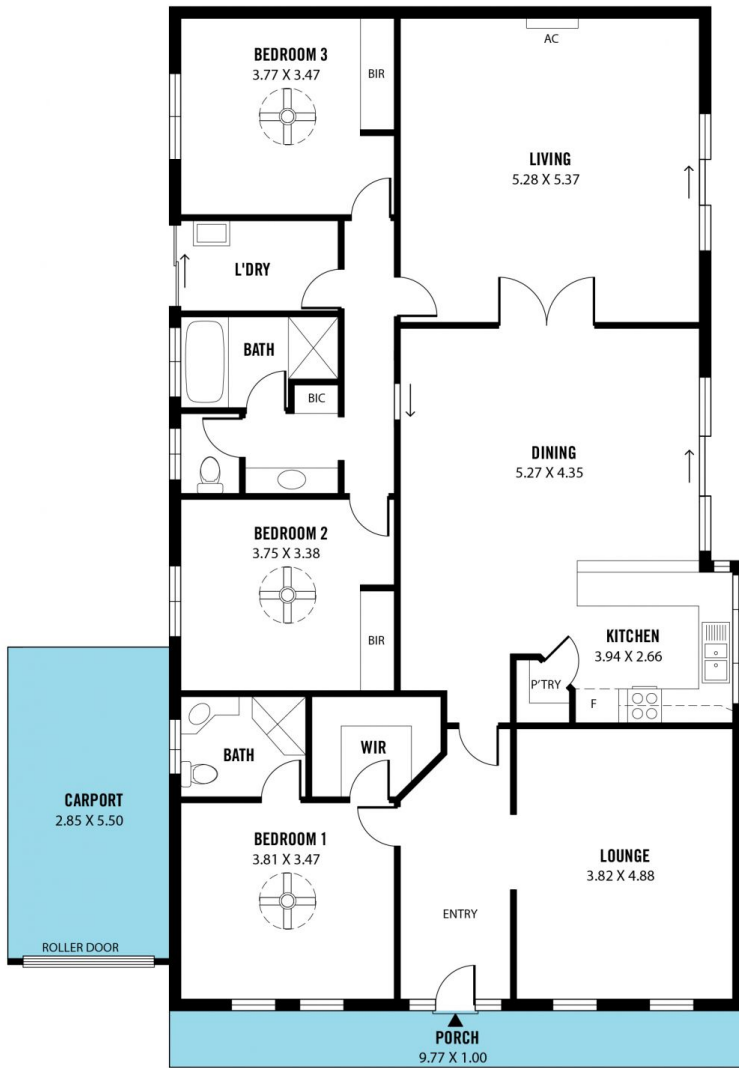
Seriously impressive, this charming home offers a neutral palette, stunning slate floors and huge windows to let in an abundance of natural light allowing that connection to the outside world.

[For full version visit the website](https://www.magain.com.au/property/3-kerley-way-noarlunga-downs-sa/8431858)

Type : House
Price : \$ 713,000
Building Size : 20 sqm
Land Size : 1161 sqm
View : <https://www.magain.com.au/property/3-kerley-way-noarlunga-downs-sa/8431858>



Danielle Comer
08 8322 6111



Scale in metres. This drawing is for illustration purposes only. All measurements are approximate and details intended to be relied upon should be independently verified.

Produced by The Fotobase Group