

MAGAIN



We want to keep our beautiful state,
and our vendors' homes safe.
So please wear a mask at
our open inspections.

magain
REAL ESTATE



208 Pimpala Road WOODCROFT SA

3 1 1

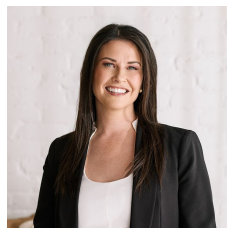
Please contact Danielle Comer or Rachael Farror for viewing times.

Surrounded by quality homes in one of Woodcroft's most prestigious pockets, this spacious three bedroom family home presents approximately 128sqm of living space. Featuring a versatile design, it is perfect for first home buyers, investors and the growing family while being close to local schools, shops and public transport options.

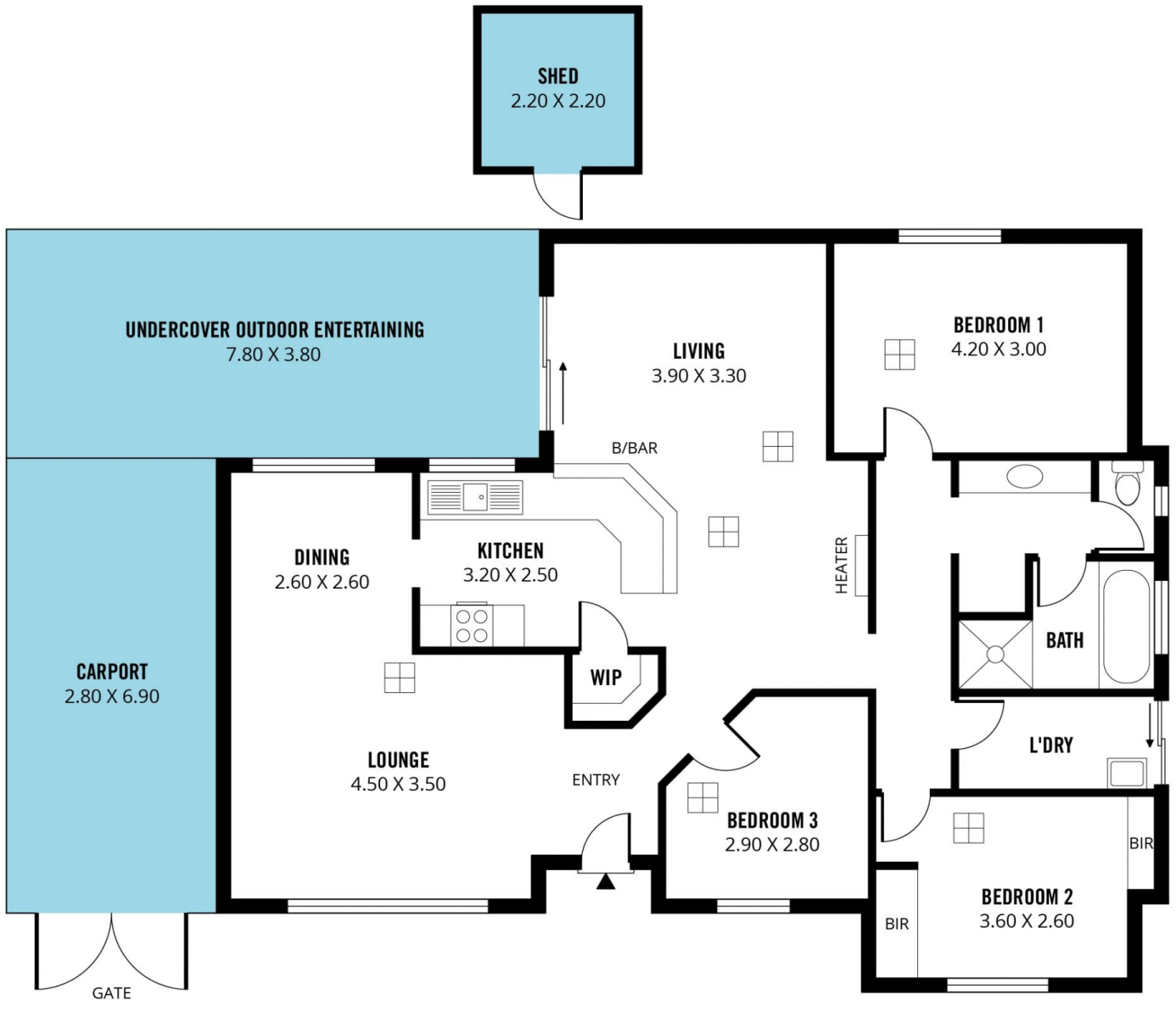
Upon entry you are greeted by a neat hallway that opens up into a spacious formal lounge and dining, where the cozy carpeted flooring with a neutral palette gives you that instant feeling of luxurious family living. Adjacent to the formal living is the home's kitchen overlooking a casual

[For full version visit the website](https://www.magain.com.au/property/208-pimpala-road-woodcroft-sa/8431874)

Type : House
Building Size : 14 sqm
Land Size : 600 sqm
View : <https://www.magain.com.au/property/208-pimpala-road-woodcroft-sa/8431874>



Danielle Comer
08 8322 6111



Scale in metres. This drawing is for illustration purposes only. All measurements are approximate and details intended to be relied upon should be independently verified.

Produced by **The Fotobase Group**