

# MAGAIN



## 2 Holt Court TROTT PARK SA

3 2 1

Please contact Danielle Comer or Rachael Farror for viewing times.

Surrounded by quality homes on a great sized 750sqm (approx.) allotment, this impressive family home delivers contemporary living at its very best, while its floorplan is well designed to make great use of the space provided. Representing an outstanding opportunity for investors looking for that stand out property or the young family wanting nothing to do but move straight in.

Upon entry you are greeted by a spacious formal lounge with adjacent study, which transitions seamlessly through to an open plan kitchen/family living and meals. With the combination of cozy carpets, timber-like floors, a neutral

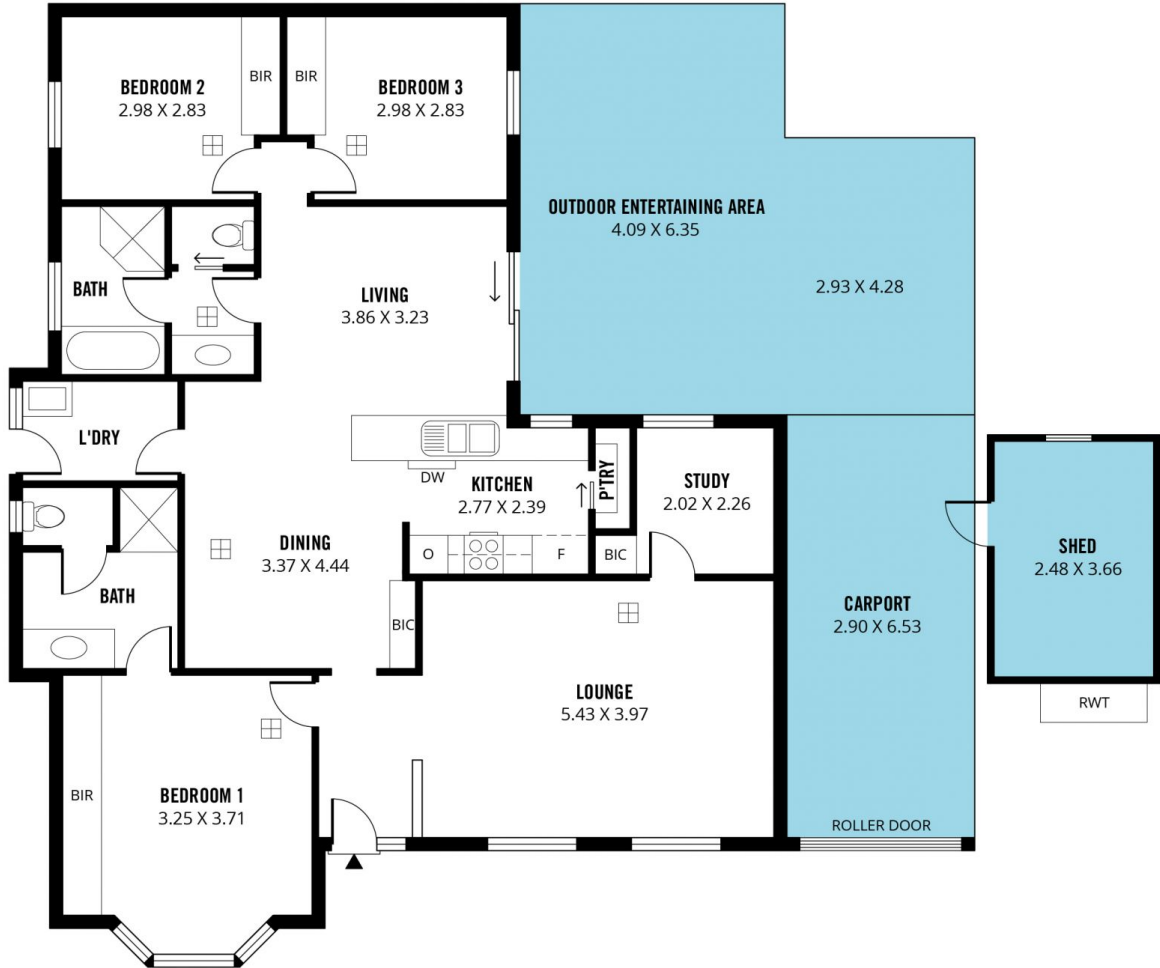
[For full version visit the website](https://www.magain.com.au/property/2-holt-court-trott-park-sa/8431904)

**Type** : House  
**Price** : \$ 652,000  
**Building Size** : 15 sqm  
**Land Size** : 750 sqm  
**View** : <https://www.magain.com.au/property/2-holt-court-trott-park-sa/8431904>



**Danielle Comer**  
08 8322 6111

**GARDEN SHED**  
3.01 X 2.06



Scale in metres. This drawing is for illustration purposes only. All measurements are approximate and details intended to be relied upon should be independently verified.

Produced by **The Fotobase Group**