

# MAGAIN



## 23 Kensington Street CLOVELLY PARK SA

3 2 1

Please contact Rachael Farror or Danielle Comer for viewing times.

Perfectly positioned on a beautiful tree lined street in Clovelly Park, this high quality home set on a great sized 535 square metre corner allotment is ideally located only a few minutes' from popular public and private schools Sacred Heart College Champagnat Campus and Hamilton Secondary plus plenty of Junior Primary Public and Catholic Schools close by, making it an outstanding opportunity for both home owners and investors alike.

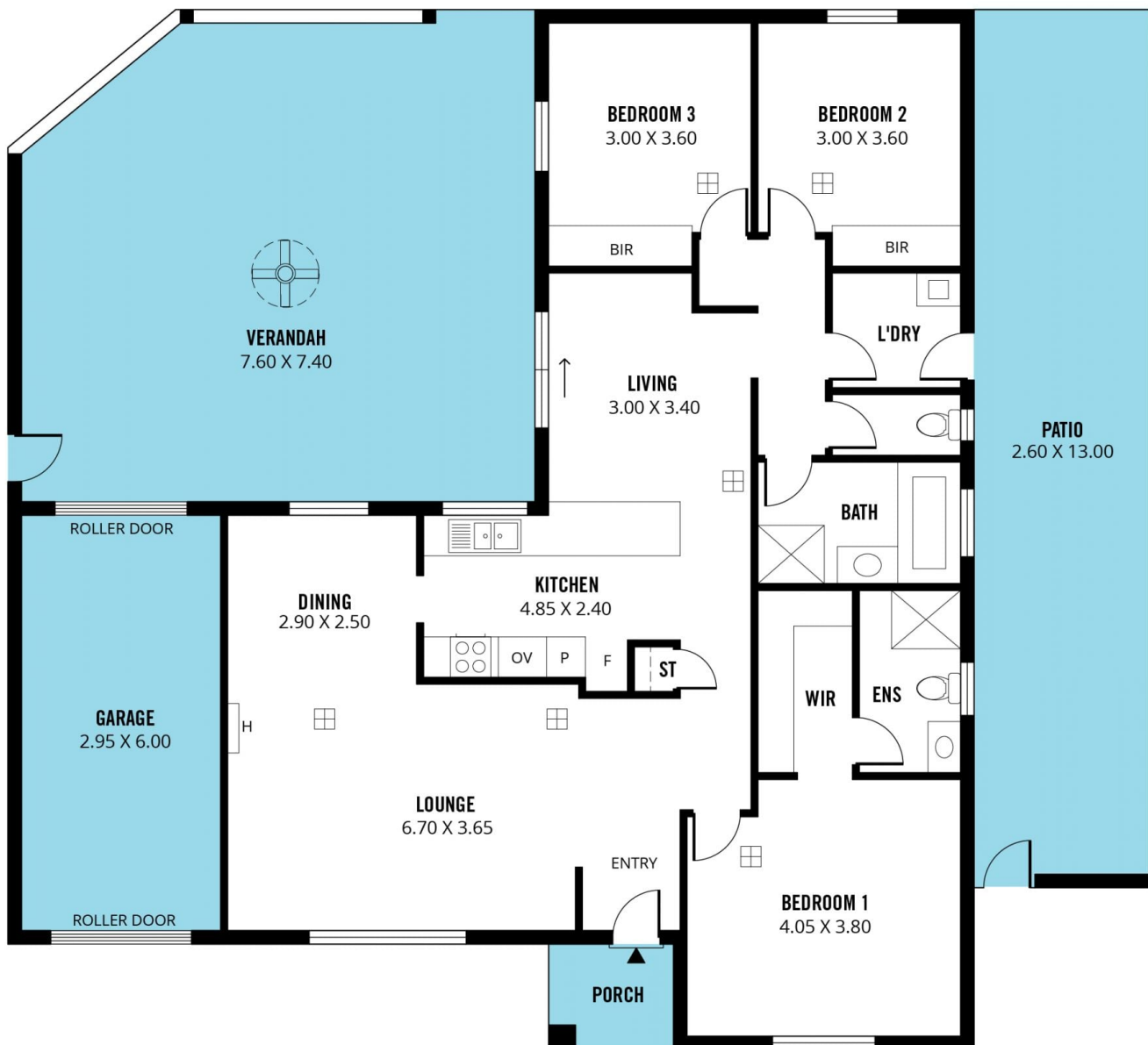
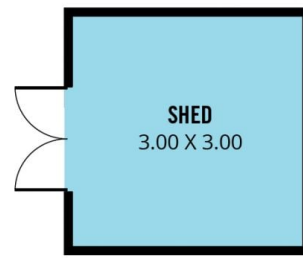
Not a finger to be lifted on this fastidiously maintained home! A wide entry way with quality timber-like floors welcomes you as you walk through the door, then flows

[For full version visit the website](https://www.magain.com.au/property/23-kensington-street-clovelly-park-sa/8431923)

**Type** : House  
**Building Size** : 15 sqm  
**Land Size** : 535 sqm  
**View** : <https://www.magain.com.au/property/23-kensington-street-clovelly-park-sa/8431923>



**Danielle Comer**  
08 8322 6111



Scale in metres. This drawing is for illustration purposes only. All measurements are approximate and details intended to be relied upon should be independently verified.

Produced by **The Fotobase Group**