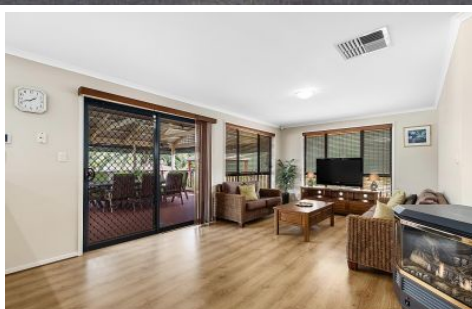


# MAGAIN



## 4 Mark Court O'HALLORAN HILL SA

4  2  3 

Please contact Rachael Farror or Danielle Comer for viewing times.

Located on a private and quiet cul dec sac with numerous upgrades and unbeatable valley views from every corner, you will be sure to put this O'Halloran Hill winner at the very top of your list. With the fantastic Matthew Street Reserve only a few minutes walk away as well as being located close to local schools, shops and public transport options for easy access to the CBD, it's a fantastic opportunity for investors and those wishing to move into this increasingly popular location.

Welcoming you at the front of the home is a lovely wide entry hall laden with timber-like floors, which flows past a

[For full version visit the website](#)

**Type** : House  
**Building Size** : 19 sqm  
**Land Size** : 780 sqm  
**View** : <https://www.magain.com.au/property/4-mark-court-ohalloran-hill-sa/8431932>



Scale in metres. This drawing is for illustration purposes only. All measurements are approximate and details intended to be relied upon should be independently verified.

Produced by **The Fotobase Group**