

MAGAIN



3 Holdfast Drive SHEIDOW PARK SA

3 🛏 2 🚿 2 🚗

Please contact Danielle Comer or Rachael Farror for viewing times.

Situated amongst the beautiful tree lined streets of Sheidow Park on an easily maintainable 465sqm allotment, this impressive three bedroom (plus study) family home with delightful curb-side appeal is located on a quiet street directly opposite a fantastic reserve. Built by Hickinbotham, it represents an outstanding opportunity for the growing family or a savvy investor and close to popular local schools, shops and public transport options, you will be sure to put this quality home at the very top of your list!

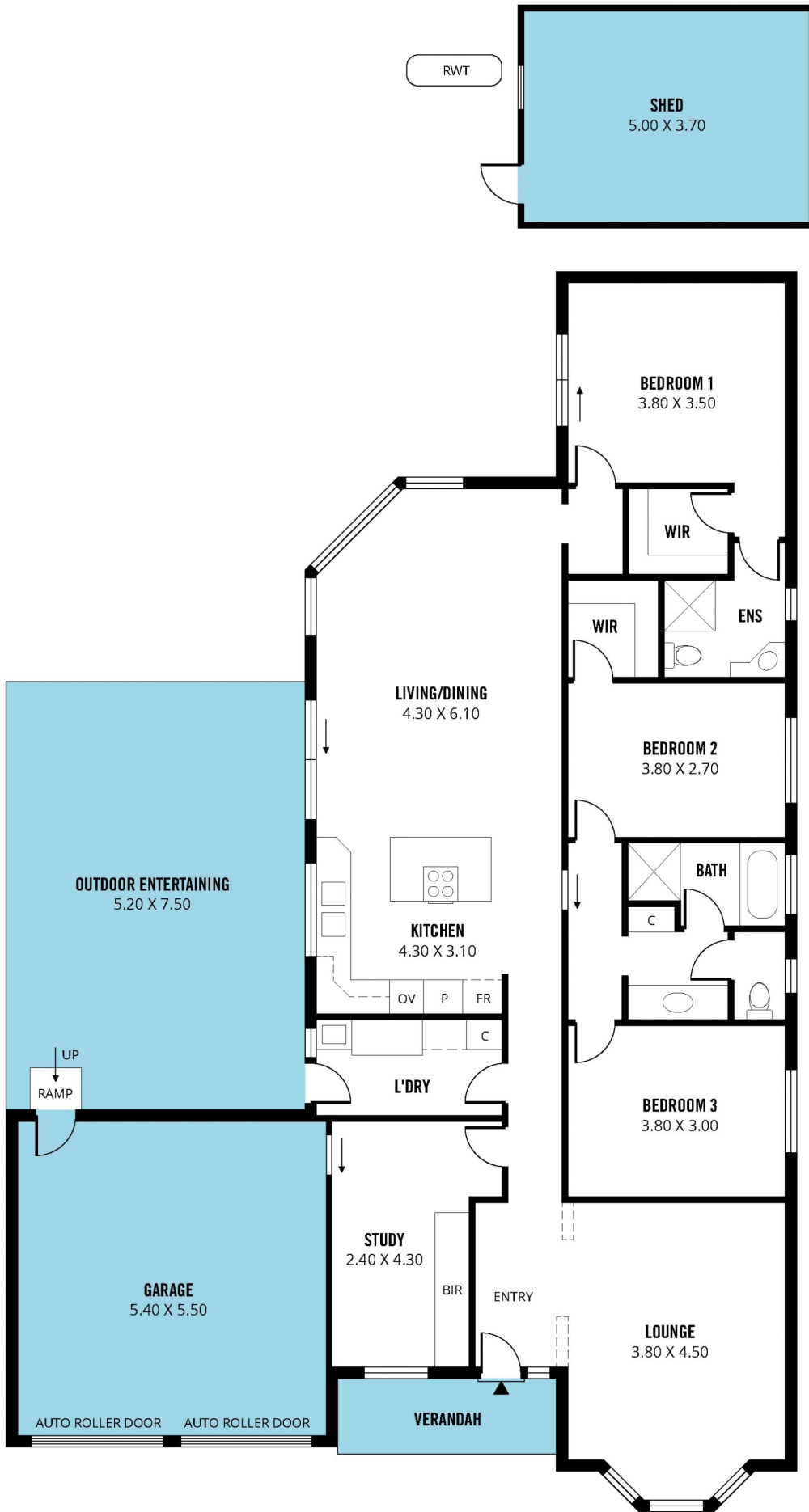
Upon entry you are welcomed by a lovely wide hallway which flows past a front positioned home office with a

[For full version visit the website](https://www.magain.com.au/property/3-holdfast-drive-sheidow-park-sa/8431949)

Type : House
Building Size : 20 sqm
Land Size : 465 sqm
View : <https://www.magain.com.au/property/3-holdfast-drive-sheidow-park-sa/8431949>



Danielle Comer
08 8322 6111



Scale in metres. This drawing is for illustration purposes only. All measurements are approximate and details intended to be relied upon should be independently verified.

Produced by **The Fotobase Group**